



[Go to Product page](#)

Datasheet for ABIN3184503

## anti-EPH Receptor A3 antibody (C-Term)

### 1 Image

#### Overview

Quantity:	100 µL
Target:	EPH Receptor A3 (EPHA3)
Binding Specificity:	C-Term
Reactivity:	Human, Mouse, Rat
Host:	Rabbit
Clonality:	Polyclonal
Conjugate:	This EPH Receptor A3 antibody is un-conjugated
Application:	Western Blotting (WB), ELISA

#### Product Details

Immunogen:	Synthesized peptide derived from the C-terminal region of human EphA3.
Isotype:	IgG
Specificity:	EphA3 Polyclonal Antibody detects endogenous levels of EphA3 protein.
Characteristics:	Rabbit Polyclonal to EphA3.
Purification:	The antibody was affinity-purified from rabbit antiserum by affinity-chromatography using epitope-specific immunogen.

#### Target Details

Target:	EPH Receptor A3 (EPHA3)
Alternative Name:	EphA3 ( <a href="#">EPHA3 Products</a> )

## Target Details

Molecular Weight:	120 kDa
Gene ID:	2042
UniProt:	<a href="#">P29320</a>
Pathways:	<a href="#">RTK Signaling, Regulation of Cell Size</a>

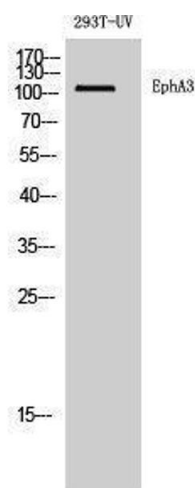
## Application Details

Application Notes:	WB 1:500-1:2000, ELISA 1:40000,
Restrictions:	For Research Use only

## Handling

Format:	Liquid
Concentration:	1 mg/mL
Buffer:	Liquid in PBS containing 50 % glycerol, 0.5 % BSA and 0.02 % sodium azide.
Preservative:	Sodium azide
Precaution of Use:	This product contains Sodium azide: a POISONOUS AND HAZARDOUS SUBSTANCE which should be handled by trained staff only.
Handling Advice:	Avoid repeated freeze/thaw cycles.
Storage:	-20 °C
Storage Comment:	Store at -20°C.

## Images



### Western Blotting

Image 1.