



[Go to Product page](#)

Datasheet for ABIN3184508  
**anti-EPHB1/2 antibody (Ser10)**

2 Images

Overview

|                      |   |
|----------------------|---|
| Quantity:            | 100 µL  |
| Target:              | EPHB1/2   |
| Binding Specificity: | Ser10   |
| Reactivity:          | Human, Mouse, Rat   |
| Host:                | Rabbit  |
| Clonality:           | Polyclonal  |
| Conjugate:           | This EPHB1/2 antibody is un-conjugated  |
| Application:         | Immunofluorescence (IF), Western Blotting (WB), ELISA, Immunohistochemistry (IHC) |

Product Details

|                  |   |
|------------------|---|
| Immunogen:       | Synthesized peptide derived from human EphB1/2 around the non-phosphorylation site of Y594/604.                       |
| Isotype:         | IgG   |
| Specificity:     | EphB1/2 Polyclonal Antibody detects endogenous levels of EphB1/2 protein.   |
| Characteristics: | Rabbit Polyclonal to EphB1/2.   |
| Purification:    | The antibody was affinity-purified from rabbit antiserum by affinity-chromatography using epitope-specific immunogen. |

Target Details

|         |         |
|---------|---------|
| Target: | EPHB1/2 |
|---------|---------|

## Target Details

Alternative Name: EphB1/2 ([EPHB1/2 Products](#))

Molecular Weight: 17 kDa

Gene ID: 2047, 1969

UniProt: [P54762](#), [P29323](#)

## Application Details

Application Notes: WB 1:500-1:2000, IHC 1:100-1:300, IF 1:200-1:1000, ELISA 1:40000,

Restrictions: For Research Use only

## Handling

Format: Liquid

Concentration: 1 mg/mL

Buffer: Liquid in PBS containing 50 % glycerol, 0.5 % BSA and 0.02 % sodium azide.

Preservative: Sodium azide

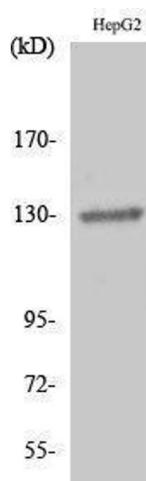
Precaution of Use: This product contains Sodium azide: a POISONOUS AND HAZARDOUS SUBSTANCE which should be handled by trained staff only.

Handling Advice: Avoid repeated freeze/thaw cycles.

Storage: -20 °C

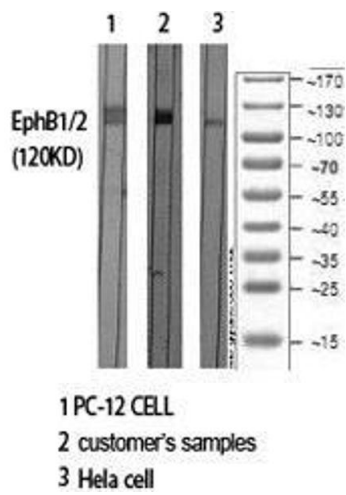
Storage Comment: Store at -20°C.

## Images



### Western Blotting

Image 1.



### Western Blotting

**Image 2.** Western Blot (WB) analysis of specific cells using EphB1/2 Polyclonal Antibody.