



[Go to Product page](#)

Datasheet for ABIN3184515
anti-Ephrin A3 antibody (C-Term)

1 Image

Overview

Quantity:	100 µL
Target:	Ephrin A3 (EFNA3)
Binding Specificity:	C-Term
Reactivity:	Human, Mouse, Rat
Host:	Rabbit
Clonality:	Polyclonal
Conjugate:	This Ephrin A3 antibody is un-conjugated
Application:	Western Blotting (WB), ELISA, Immunohistochemistry (IHC), Immunofluorescence (IF)

Product Details

Immunogen:	Synthesized peptide derived from the C-terminal region of human Ephrin-A3.
Isotype:	IgG
Specificity:	Ephrin-A3 Polyclonal Antibody detects endogenous levels of Ephrin-A3 protein.
Characteristics:	Rabbit Polyclonal to Ephrin-A3.
Purification:	The antibody was affinity-purified from rabbit antiserum by affinity-chromatography using epitope-specific immunogen.

Target Details

Target:	Ephrin A3 (EFNA3)
Alternative Name:	Ephrin-A3 (EFNA3 Products)

Target Details

Molecular Weight: 38 kDa

Gene ID: 1944

UniProt: [P52797](#)

Pathways: [RTK Signaling](#)

Application Details

Application Notes: WB 1:500-1:2000, IHC 1:100-1:300, IF 1:200-1:1000, ELISA 1:10000,

Restrictions: For Research Use only

Handling

Format: Liquid

Concentration: 1 mg/mL

Buffer: Liquid in PBS containing 50 % glycerol, 0.5 % BSA and 0.02 % sodium azide.

Preservative: Sodium azide

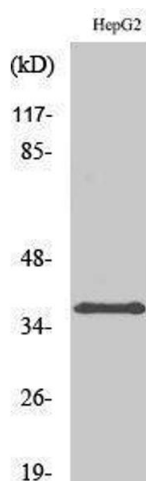
Precaution of Use: This product contains Sodium azide: a POISONOUS AND HAZARDOUS SUBSTANCE which should be handled by trained staff only.

Handling Advice: Avoid repeated freeze/thaw cycles.

Storage: -20 °C

Storage Comment: Store at -20°C.

Images



Western Blotting

Image 1.