

Datasheet for ABIN3184543  
**anti-ERK1/2 antibody (Ser1106)**



[Go to Product page](#)

2 Images

## Overview

Quantity:	100 µL
Target:	ERK1/2 (MAPK1/3)
Binding Specificity:	Ser1106
Reactivity:	Human, Mouse, Rat
Host:	Rabbit
Clonality:	Polyclonal
Conjugate:	This ERK1/2 antibody is un-conjugated
Application:	Western Blotting (WB), ELISA, Immunofluorescence (IF)

## Product Details

Immunogen:	Synthesized peptide derived from human ERK 1/2 around the non-phosphorylation site of T202.
Isotype:	IgG
Specificity:	ERK 1/2 Polyclonal Antibody detects endogenous levels of ERK 1/2 protein.
Characteristics:	Rabbit Polyclonal to ERK 1/2.
Purification:	The antibody was affinity-purified from rabbit antiserum by affinity-chromatography using epitope-specific immunogen.

## Target Details

Target:	ERK1/2 (MAPK1/3)
Alternative Name:	ERK 1/2 ( <a href="#">MAPK1/3 Products</a> )

## Target Details

Molecular Weight:	174 kDa
Gene ID:	5595, 5594
UniProt:	<a href="#">P27361</a> , <a href="#">P28482</a>

## Application Details

Application Notes:	WB 1:500-1:2000, IF 1:200-1:1000, ELISA 1:10000,
Restrictions:	For Research Use only

## Handling

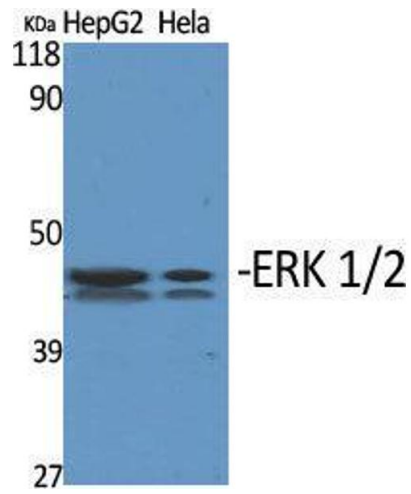
Format:	Liquid
Concentration:	1 mg/mL
Buffer:	Liquid in PBS containing 50 % glycerol, 0.5 % BSA and 0.02 % sodium azide.
Preservative:	Sodium azide
Precaution of Use:	This product contains Sodium azide: a POISONOUS AND HAZARDOUS SUBSTANCE which should be handled by trained staff only.
Handling Advice:	Avoid repeated freeze/thaw cycles.
Storage:	-20 °C
Storage Comment:	Store at -20°C.

## Images



### Western Blotting

Image 1.



### Western Blotting

**Image 2.** Western Blot (WB) analysis of specific cells using ERK 1/2 Polyclonal Antibody.