

Datasheet for ABIN3184557
anti-ESR2 antibody (Ser367)



[Go to Product page](#)

2 Images

Overview

Quantity:	100 µL
Target:	ESR2
Binding Specificity:	Ser367
Reactivity:	Human, Mouse, Rat
Host:	Rabbit
Clonality:	Polyclonal
Conjugate:	This ESR2 antibody is un-conjugated
Application:	Western Blotting (WB), ELISA, Immunofluorescence (IF)

Product Details

Immunogen:	Synthesized peptide derived from human ERbeta around the non-phosphorylation site of S105.
Isotype:	IgG
Specificity:	ERβ Polyclonal Antibody detects endogenous levels of ERβ protein.
Characteristics:	Rabbit Polyclonal to ERβ.
Purification:	The antibody was affinity-purified from rabbit antiserum by affinity-chromatography using epitope-specific immunogen.

Target Details

Target:	ESR2
Alternative Name:	ERbeta (ESR2 Products)

Target Details

Molecular Weight: 45 kDa

Gene ID: 2100

UniProt: [Q92731](#)

Pathways: [Nuclear Receptor Transcription Pathway](#), [EGFR Signaling Pathway](#), [Intracellular Steroid Hormone Receptor Signaling Pathway](#), [Steroid Hormone Mediated Signaling Pathway](#), [Regulation of Intracellular Steroid Hormone Receptor Signaling](#)

Application Details

Application Notes: WB 1:500-1:2000, IF 1:200-1:1000, ELISA 1:10000,

Restrictions: For Research Use only

Handling

Format: Liquid

Concentration: 1 mg/mL

Buffer: Liquid in PBS containing 50 % glycerol, 0.5 % BSA and 0.02 % sodium azide.

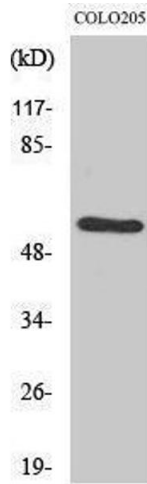
Preservative: Sodium azide

Precaution of Use: This product contains Sodium azide: a POISONOUS AND HAZARDOUS SUBSTANCE which should be handled by trained staff only.

Handling Advice: Avoid repeated freeze/thaw cycles.

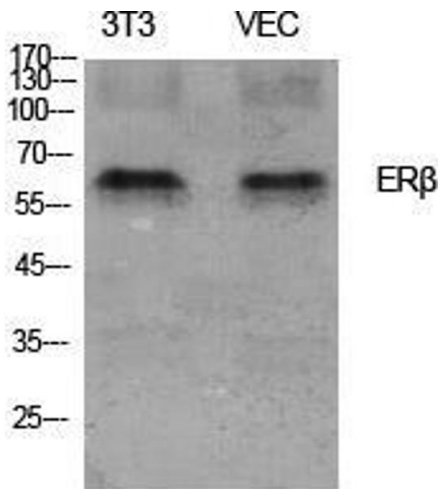
Storage: -20 °C

Storage Comment: Store at -20°C.



Western Blotting

Image 1.



Western Blotting

Image 2. Western Blot (WB) analysis of specific cells using ERbeta Polyclonal Antibody.