



[Go to Product page](#)

Datasheet for ABIN3184565

anti-EWSR1 antibody (Internal Region)

3 Images

Overview

Quantity:	100 µL
Target:	EWSR1
Binding Specificity:	Internal Region
Reactivity:	Human, Mouse, Rat
Host:	Rabbit
Clonality:	Polyclonal
Conjugate:	This EWSR1 antibody is un-conjugated
Application:	Western Blotting (WB), ELISA

Product Details

Immunogen:	Synthesized peptide derived from the Internal region of human EWS.
Isotype:	IgG
Specificity:	EWS Polyclonal Antibody detects endogenous levels of EWS protein.
Characteristics:	Rabbit Polyclonal to EWS.
Purification:	The antibody was affinity-purified from rabbit antiserum by affinity-chromatography using epitope-specific immunogen.

Target Details

Target:	EWSR1
Alternative Name:	EWS (EWSR1 Products)

Target Details

Molecular Weight:	68 kDa
Gene ID:	2130
UniProt:	Q01844

Application Details

Application Notes:	WB 1:500-1:2000, ELISA 1:10000,
Restrictions:	For Research Use only

Handling

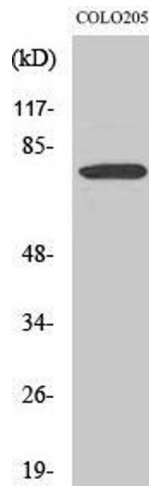
Format:	Liquid
Concentration:	1 mg/mL
Buffer:	Liquid in PBS containing 50 % glycerol, 0.5 % BSA and 0.02 % sodium azide.
Preservative:	Sodium azide
Precaution of Use:	This product contains Sodium azide: a POISONOUS AND HAZARDOUS SUBSTANCE which should be handled by trained staff only.
Handling Advice:	Avoid repeated freeze/thaw cycles.
Storage:	-20 °C
Storage Comment:	Store at -20°C.

Images



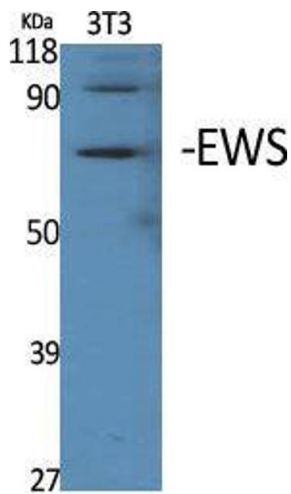
Western Blotting

Image 1.



Western Blotting

Image 2. Western Blot (WB) analysis of COLO205 cells using EWS Polyclonal Antibody.



Western Blotting

Image 3. Western Blot (WB) analysis of specific cells using EWS Polyclonal Antibody.