



[Go to Product page](#)

Datasheet for ABIN3184607  
**anti-FER antibody (C-Term)**

1 Image

Overview

Quantity:	100 µL
Target:	FER
Binding Specificity:	C-Term
Reactivity:	Human, Mouse, Rat
Host:	Rabbit
Clonality:	Polyclonal
Conjugate:	This FER antibody is un-conjugated
Application:	Western Blotting (WB), ELISA, Immunohistochemistry (IHC), Immunofluorescence (IF)

Product Details

Immunogen:	Synthesized peptide derived from the C-terminal region of human Fer.
Isotype:	IgG
Specificity:	Fer Polyclonal Antibody detects endogenous levels of Fer protein.
Characteristics:	Rabbit Polyclonal to Fer.
Purification:	The antibody was affinity-purified from rabbit antiserum by affinity-chromatography using epitope-specific immunogen.

Target Details

Target:	FER
Alternative Name:	Fer ( <a href="#">FER Products</a> )

## Target Details

Molecular Weight: 95 kDa

Gene ID: 2241

UniProt: [P16591](#)

## Application Details

Application Notes: WB 1:500-1:2000, IHC 1:100-1:300, IF 1:200-1:1000, ELISA 1:5000,

Restrictions: For Research Use only

## Handling

Format: Liquid

Concentration: 1 mg/mL

Buffer: Liquid in PBS containing 50 % glycerol, 0.5 % BSA and 0.02 % sodium azide.

Preservative: Sodium azide

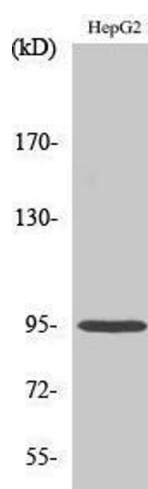
Precaution of Use: This product contains Sodium azide: a POISONOUS AND HAZARDOUS SUBSTANCE which should be handled by trained staff only.

Handling Advice: Avoid repeated freeze/thaw cycles.

Storage: -20 °C

Storage Comment: Store at -20°C.

## Validation report #103754 for Immunohistochemistry (IHC)



### Western Blotting

Image 1.