



[Go to Product page](#)

Datasheet for ABIN3184630  
**anti-Filaggrin antibody (Ser376)**

1 Image

### Overview

Quantity:	100 µL
Target:	Filaggrin (FLG)
Binding Specificity:	Ser376
Reactivity:	Human, Mouse, Rat
Host:	Rabbit
Clonality:	Polyclonal
Conjugate:	This Filaggrin antibody is un-conjugated
Application:	Immunohistochemistry (IHC), Western Blotting (WB), ELISA

### Product Details

Immunogen:	Synthesized peptide derived from human Flg around the non-phosphorylation site of Y766.
Isotype:	IgG
Specificity:	Flg Polyclonal Antibody detects endogenous levels of Flg protein.
Characteristics:	Rabbit Polyclonal to Flg.
Purification:	The antibody was affinity-purified from rabbit antiserum by affinity-chromatography using epitope-specific immunogen.

### Target Details

Target:	Filaggrin (FLG)
Alternative Name:	Flg ( <a href="#">FLG Products</a> )

## Target Details

Molecular Weight:	90 kDa
Gene ID:	2260
UniProt:	<a href="#">P11362</a>
Pathways:	<a href="#">Sensory Perception of Sound, Stem Cell Maintenance</a>

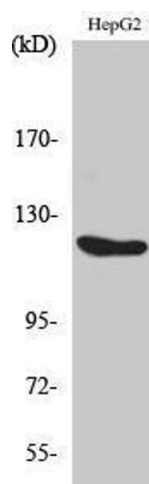
## Application Details

Application Notes:	WB 1:500-1:2000, IHC 1:100-1:300, ELISA 1:5000,
Restrictions:	For Research Use only

## Handling

Format:	Liquid
Concentration:	1 mg/mL
Buffer:	Liquid in PBS containing 50 % glycerol, 0.5 % BSA and 0.02 % sodium azide.
Preservative:	Sodium azide
Precaution of Use:	This product contains Sodium azide: a POISONOUS AND HAZARDOUS SUBSTANCE which should be handled by trained staff only.
Handling Advice:	Avoid repeated freeze/thaw cycles.
Storage:	-20 °C
Storage Comment:	Store at -20°C.

## Images



### Western Blotting

Image 1.