

Datasheet for ABIN3184641
anti-FLT3 antibody (Ser387)



[Go to Product page](#)

1 Image

Overview

Quantity:	100 µL
Target:	FLT3
Binding Specificity:	Ser387
Reactivity:	Human, Mouse
Host:	Rabbit
Clonality:	Polyclonal
Conjugate:	This FLT3 antibody is un-conjugated
Application:	Western Blotting (WB), ELISA

Product Details

Immunogen:	Synthesized peptide derived from human Flt3 around the non-phosphorylation site of Y599.
Isotype:	IgG
Specificity:	Flt3 Polyclonal Antibody detects endogenous levels of Flt3 protein.
Characteristics:	Rabbit Polyclonal to Flt3.
Purification:	The antibody was affinity-purified from rabbit antiserum by affinity-chromatography using epitope-specific immunogen.

Target Details

Target:	FLT3
Alternative Name:	Flt3 (FLT3 Products)

Target Details

Molecular Weight:	72 kDa
Gene ID:	2322
UniProt:	P36888
Pathways:	RTK Signaling

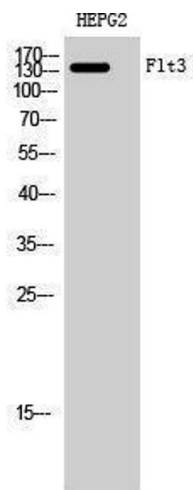
Application Details

Application Notes:	WB 1:500-1:2000, ELISA 1:20000,
Restrictions:	For Research Use only

Handling

Format:	Liquid
Concentration:	1 mg/mL
Buffer:	Liquid in PBS containing 50 % glycerol, 0.5 % BSA and 0.02 % sodium azide.
Preservative:	Sodium azide
Precaution of Use:	This product contains Sodium azide: a POISONOUS AND HAZARDOUS SUBSTANCE which should be handled by trained staff only.
Handling Advice:	Avoid repeated freeze/thaw cycles.
Storage:	-20 °C
Storage Comment:	Store at -20°C.

Images



Western Blotting

Image 1.