



[Go to Product page](#)

Datasheet for ABIN3184696
anti-FRS2 antibody (Tyr580)

3 Images

Overview

Quantity:	100 µL
Target:	FRS2
Binding Specificity:	Tyr580
Reactivity:	Human, Mouse
Host:	Rabbit
Clonality:	Polyclonal
Conjugate:	This FRS2 antibody is un-conjugated
Application:	Western Blotting (WB), ELISA

Product Details

Immunogen:	Synthesized peptide derived from human FRS2 around the non-phosphorylation site of Y196.
Isotype:	IgG
Specificity:	FRS2 Polyclonal Antibody detects endogenous levels of FRS2 protein.
Characteristics:	Rabbit Polyclonal to FRS2.
Purification:	The antibody was affinity-purified from rabbit antiserum by affinity-chromatography using epitope-specific immunogen.

Target Details

Target:	FRS2
Alternative Name:	FRS2 (FRS2 Products)

Target Details

Molecular Weight: 115 kDa

Gene ID: 10818

UniProt: [Q8WU20](#)

Pathways: [Fc-epsilon Receptor Signaling Pathway](#), [EGFR Signaling Pathway](#), [Neurotrophin Signaling Pathway](#), [Signaling Events mediated by VEGFR1 and VEGFR2](#)

Application Details

Application Notes: WB 1:500-1:2000, ELISA 1:40000,

Restrictions: For Research Use only

Handling

Format: Liquid

Concentration: 1 mg/mL

Buffer: Liquid in PBS containing 50 % glycerol, 0.5 % BSA and 0.02 % sodium azide.

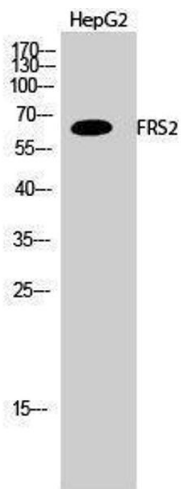
Preservative: Sodium azide

Precaution of Use: This product contains Sodium azide: a POISONOUS AND HAZARDOUS SUBSTANCE which should be handled by trained staff only.

Handling Advice: Avoid repeated freeze/thaw cycles.

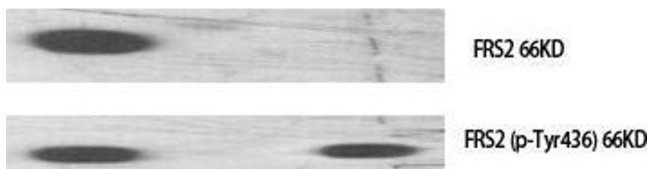
Storage: -20 °C

Storage Comment: Store at -20°C.



Western Blotting

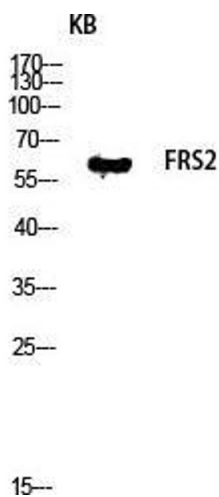
Image 1.



Western Blotting

Image 2. Western Blot (WB) analysis of specific cells using FRS2 Polyclonal Antibody.

-	+	- phospho-peptide
-	-	+ non-phospho-peptide
+	+	+ 3T3 NGF(customer's sample)



Western Blotting

Image 3. Western Blot (WB) analysis of KB lysis using FRS2 antibody.