



Datasheet for ABIN3184709

anti-G Protein-Coupled Receptor 132 antibody (C-Term)



[Go to Product page](#)

2 Images

Overview

Quantity:	100 µL
Target:	G Protein-Coupled Receptor 132 (GPR132)
Binding Specificity:	C-Term
Reactivity:	Human, Mouse, Monkey
Host:	Rabbit
Clonality:	Polyclonal
Conjugate:	This G Protein-Coupled Receptor 132 antibody is un-conjugated
Application:	Western Blotting (WB), ELISA, Immunofluorescence (IF)

Product Details

Immunogen:	Synthesized peptide derived from the C-terminal region of human G2A.
Isotype:	IgG
Specificity:	G2A Polyclonal Antibody detects endogenous levels of G2A protein.
Characteristics:	Rabbit Polyclonal to G2A.
Purification:	The antibody was affinity-purified from rabbit antiserum by affinity-chromatography using epitope-specific immunogen.

Target Details

Target:	G Protein-Coupled Receptor 132 (GPR132)
Alternative Name:	G2A (GPR132 Products)

Target Details

Molecular Weight: 42 kDa

Gene ID: 29933

UniProt: [Q9UNW8](#)

Application Details

Application Notes: WB 1:500-1:2000, IF 1:200-1:1000, ELISA 1:5000,

Restrictions: For Research Use only

Handling

Format: Liquid

Concentration: 1 mg/mL

Buffer: Liquid in PBS containing 50 % glycerol, 0.5 % BSA and 0.02 % sodium azide.

Preservative: Sodium azide

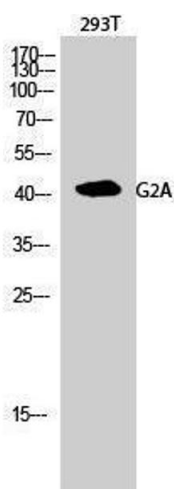
Precaution of Use: This product contains Sodium azide: a POISONOUS AND HAZARDOUS SUBSTANCE which should be handled by trained staff only.

Handling Advice: Avoid repeated freeze/thaw cycles.

Storage: -20 °C

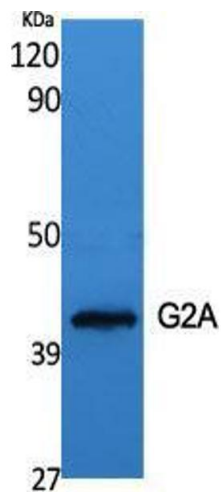
Storage Comment: Store at -20°C.

Images



Western Blotting

Image 1.



Western Blotting

Image 2. Western Blot (WB) analysis of specific cells using G2A Polyclonal Antibody.