

Datasheet for ABIN3184771
anti-TUBGCP5 antibody (Internal Region)



[Go to Product page](#)

3 Images

Overview

Quantity:	100 µL
Target:	TUBGCP5
Binding Specificity:	Internal Region
Reactivity:	Human, Mouse, Rat
Host:	Rabbit
Clonality:	Polyclonal
Conjugate:	This TUBGCP5 antibody is un-conjugated
Application:	Western Blotting (WB), ELISA, Immunohistochemistry (IHC)

Product Details

Immunogen:	Synthesized peptide derived from the Internal region of human GCP5.
Isotype:	IgG
Specificity:	GCP5 Polyclonal Antibody detects endogenous levels of GCP5 protein.
Characteristics:	Rabbit Polyclonal to GCP5.
Purification:	The antibody was affinity-purified from rabbit antiserum by affinity-chromatography using epitope-specific immunogen.

Target Details

Target:	TUBGCP5
Alternative Name:	GCP5 (TUBGCP5 Products)

Target Details

Molecular Weight: 118 kDa

Gene ID: 114791

UniProt: [Q96RT8](#)

Pathways: [M Phase](#)

Application Details

Application Notes: WB 1:500-1:2000, IHC 1:100-1:300, ELISA 1:20000,

Restrictions: For Research Use only

Handling

Format: Liquid

Concentration: 1 mg/mL

Buffer: Liquid in PBS containing 50 % glycerol, 0.5 % BSA and 0.02 % sodium azide.

Preservative: Sodium azide

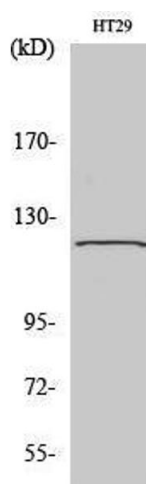
Precaution of Use: This product contains Sodium azide: a POISONOUS AND HAZARDOUS SUBSTANCE which should be handled by trained staff only.

Handling Advice: Avoid repeated freeze/thaw cycles.

Storage: -20 °C

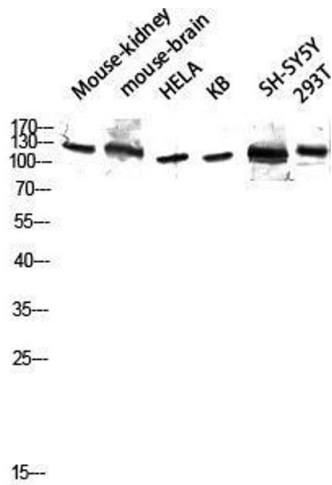
Storage Comment: Store at -20°C.

Images



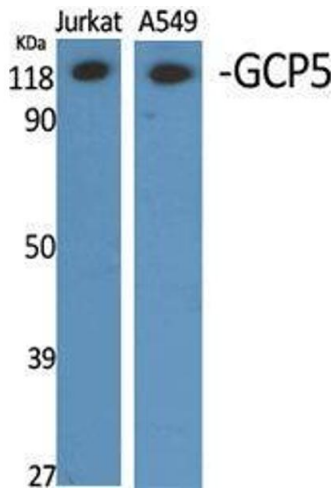
Western Blotting

Image 1.



Western Blotting

Image 2. Western Blot (WB) analysis of Mouse Kidney Mouse Brain HeLa KB SH-SY5Y 293T lysis using GCP5 antibody.



Western Blotting

Image 3. Western Blot (WB) analysis of different cells using GCP5 Polyclonal Antibody.