



[Go to Product page](#)

Datasheet for ABIN3184780

anti-DDX20 antibody (Internal Region)

1 Image

Overview

| | |
|----------------------|--------------------------------------|
| Quantity: | 100 µL |
| Target: | DDX20 |
| Binding Specificity: | Internal Region |
| Reactivity: | Human, Mouse |
| Host: | Rabbit |
| Clonality: | Polyclonal |
| Conjugate: | This DDX20 antibody is un-conjugated |
| Application: | Western Blotting (WB), ELISA |

Product Details

| | |
|------------------|---|
| Immunogen: | Synthesized peptide derived from the Internal region of human Gemin3. |
| Isotype: | IgG |
| Specificity: | Gemin3 Polyclonal Antibody detects endogenous levels of Gemin3 protein. |
| Characteristics: | Rabbit Polyclonal to Gemin3. |
| Purification: | The antibody was affinity-purified from rabbit antiserum by affinity-chromatography using epitope-specific immunogen. |

Target Details

| | |
|-------------------|---|
| Target: | DDX20 |
| Alternative Name: | Gemin3 (DDX20 Products) |

Target Details

| | |
|-------------------|--|
| Molecular Weight: | 90 kDa |
| Gene ID: | 11218 |
| UniProt: | Q9UHI6 |
| Pathways: | Ribonucleoprotein Complex Subunit Organization |

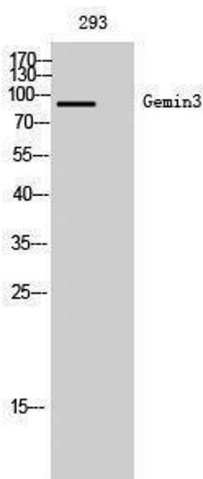
Application Details

| | |
|--------------------|---------------------------------|
| Application Notes: | WB 1:500-1:2000, ELISA 1:40000, |
| Restrictions: | For Research Use only |

Handling

| | |
|--------------------|--|
| Format: | Liquid |
| Concentration: | 1 mg/mL |
| Buffer: | Liquid in PBS containing 50 % glycerol, 0.5 % BSA and 0.02 % sodium azide. |
| Preservative: | Sodium azide |
| Precaution of Use: | This product contains Sodium azide: a POISONOUS AND HAZARDOUS SUBSTANCE which should be handled by trained staff only. |
| Handling Advice: | Avoid repeated freeze/thaw cycles. |
| Storage: | -20 °C |
| Storage Comment: | Store at -20°C. |

Images



Western Blotting

Image 1.