



[Go to Product page](#)

Datasheet for ABIN3184787

anti-Ghrelin antibody (Internal Region)

2 Images

Overview

Quantity:	100 µL
Target:	Ghrelin (GHRL)
Binding Specificity:	Internal Region
Reactivity:	Human, Rat, Mouse
Host:	Rabbit
Clonality:	Polyclonal
Conjugate:	This Ghrelin antibody is un-conjugated
Application:	Western Blotting (WB), ELISA, Immunohistochemistry (IHC)

Product Details

Immunogen:	Synthesized peptide derived from the Internal region of human Ghrelin.
Isotype:	IgG
Specificity:	Ghrelin Polyclonal Antibody detects endogenous levels of Ghrelin protein.
Characteristics:	Rabbit Polyclonal to Ghrelin.
Purification:	The antibody was affinity-purified from rabbit antiserum by affinity-chromatography using epitope-specific immunogen.

Target Details

Target:	Ghrelin (GHRL)
Alternative Name:	Ghrelin (GHRL Products)

Target Details

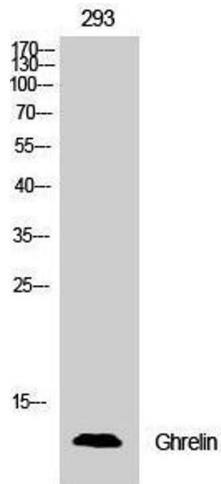
Molecular Weight:	13 kDa
Gene ID:	51738
UniProt:	Q9UBU3
Pathways:	Positive Regulation of Peptide Hormone Secretion , Hormone Transport , Peptide Hormone Metabolism , Negative Regulation of Hormone Secretion , Synaptic Membrane , Feeding Behaviour

Application Details

Application Notes:	WB 1:500-1:2000, IHC 1:100-1:300, ELISA 1:10000,
Restrictions:	For Research Use only

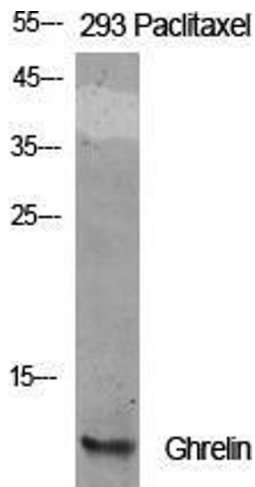
Handling

Format:	Liquid
Concentration:	1 mg/mL
Buffer:	Liquid in PBS containing 50 % glycerol, 0.5 % BSA and 0.02 % sodium azide.
Preservative:	Sodium azide
Precaution of Use:	This product contains Sodium azide: a POISONOUS AND HAZARDOUS SUBSTANCE which should be handled by trained staff only.
Handling Advice:	Avoid repeated freeze/thaw cycles.
Storage:	-20 °C
Storage Comment:	Store at -20°C.



Western Blotting

Image 1.



Western Blotting

Image 2. Western Blot (WB) analysis of specific cells using Ghrelin Polyclonal Antibody.