



[Go to Product page](#)

Datasheet for ABIN3184869
anti-GPR158 antibody (N-Term)

1 Image

Overview

Quantity:	100 µL
Target:	GPR158
Binding Specificity:	N-Term
Reactivity:	Human, Mouse
Host:	Rabbit
Clonality:	Polyclonal
Conjugate:	This GPR158 antibody is un-conjugated
Application:	ELISA, Western Blotting (WB), Immunohistochemistry (IHC), Immunofluorescence (IF)

Product Details

Immunogen:	Synthesized peptide derived from the N-terminal region of human GPR158.
Isotype:	IgG
Specificity:	GPR158 Polyclonal Antibody detects endogenous levels of GPR158 protein.
Characteristics:	Rabbit Polyclonal to GPR158.
Purification:	The antibody was affinity-purified from rabbit antiserum by affinity-chromatography using epitope-specific immunogen.

Target Details

Target:	GPR158
Alternative Name:	GPR158 (GPR158 Products)

Target Details

Molecular Weight:	150 kDa
Gene ID:	57512
UniProt:	Q5T848
Pathways:	Regulation of G-Protein Coupled Receptor Protein Signaling

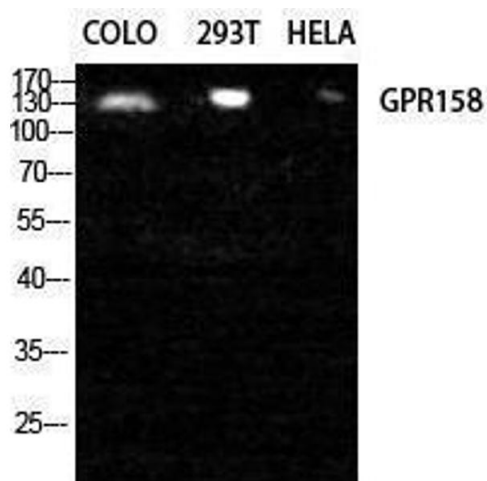
Application Details

Application Notes:	WB 1:500-1:2000, IHC 1:100-1:300, IF 1:200-1:1000, ELISA 1:5000,
Restrictions:	For Research Use only

Handling

Format:	Liquid
Concentration:	1 mg/mL
Buffer:	Liquid in PBS containing 50 % glycerol, 0.5 % BSA and 0.02 % sodium azide.
Preservative:	Sodium azide
Precaution of Use:	This product contains Sodium azide: a POISONOUS AND HAZARDOUS SUBSTANCE which should be handled by trained staff only.
Handling Advice:	Avoid repeated freeze/thaw cycles.
Storage:	-20 °C
Storage Comment:	Store at -20°C.

Images



Western Blotting

Image 1.