

Datasheet for ABIN3184921
anti-TECR antibody (C-Term)[Go to Product page](#)

1 Image

Overview

Quantity:	100 µL
Target:	TECR
Binding Specificity:	C-Term
Reactivity:	Human, Mouse, Rat
Host:	Rabbit
Clonality:	Polyclonal
Conjugate:	This TECR antibody is un-conjugated
Application:	Immunohistochemistry (IHC), ELISA

Product Details

Immunogen:	Synthesized peptide derived from the C-terminal region of human GPSN2.
Isotype:	IgG
Specificity:	GPSN2 Polyclonal Antibody detects endogenous levels of GPSN2 protein.
Characteristics:	Rabbit Polyclonal to GPSN2.
Purification:	The antibody was affinity-purified from rabbit antiserum by affinity-chromatography using epitope-specific immunogen.

Target Details

Target:	TECR
Alternative Name:	GPSN2 (TECR Products)

Target Details

Molecular Weight:	36.034 kDa
Gene ID:	9524
UniProt:	Q9NZ01

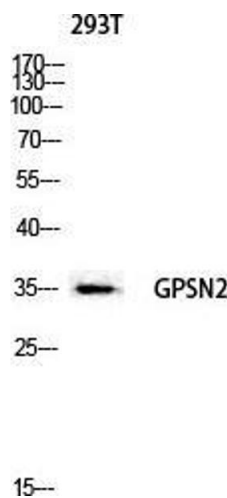
Application Details

Application Notes:	IHC 1:100-1:300, ELISA 1:40000,
Restrictions:	For Research Use only

Handling

Format:	Liquid
Concentration:	1 mg/mL
Buffer:	Liquid in PBS containing 50 % glycerol, 0.5 % BSA and 0.02 % sodium azide.
Preservative:	Sodium azide
Precaution of Use:	This product contains Sodium azide: a POISONOUS AND HAZARDOUS SUBSTANCE which should be handled by trained staff only.
Handling Advice:	Avoid repeated freeze/thaw cycles.
Storage:	-20 °C
Storage Comment:	Store at -20°C.

Images



Western Blotting

Image 1. Western Blot (WB) analysis of 293T lysis using GPSN2 antibody.