



[Go to Product page](#)

Datasheet for ABIN3184956

## anti-GSK3 alpha/beta antibody (Ser4520)

### 2 Images

#### Overview

Quantity:	100 µL
Target:	GSK3 alpha/beta (GSK3a/b)
Binding Specificity:	Ser4520
Reactivity:	Human, Mouse, Rat
Host:	Rabbit
Clonality:	Polyclonal
Conjugate:	This GSK3 alpha/beta antibody is un-conjugated
Application:	Western Blotting (WB), Immunohistochemistry (IHC), ELISA

#### Product Details

Immunogen:	Synthesized peptide derived from human GSK3alpha/beta around the non-phosphorylation site of Y279/216.
Isotype:	IgG
Specificity:	GSK3α/β Polyclonal Antibody detects endogenous levels of GSK3α/β protein.
Characteristics:	Rabbit Polyclonal to GSK3α/β.
Purification:	The antibody was affinity-purified from rabbit antiserum by affinity-chromatography using epitope-specific immunogen.

#### Target Details

Target:	GSK3 alpha/beta (GSK3a/b)
---------	---------------------------

## Target Details

Alternative Name:	GSK3alpha/beta ( <a href="#">GSK3a/b Products</a> )
Molecular Weight:	50 kDa
Gene ID:	2931
UniProt:	<a href="#">P49840</a> , <a href="#">P49841</a>

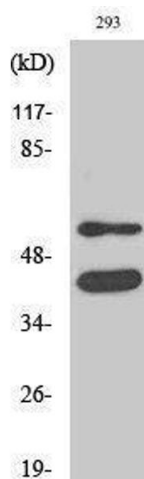
## Application Details

Application Notes:	WB 1:500-1:2000, IHC 1:100-1:300, ELISA 1:20000,
Restrictions:	For Research Use only

## Handling

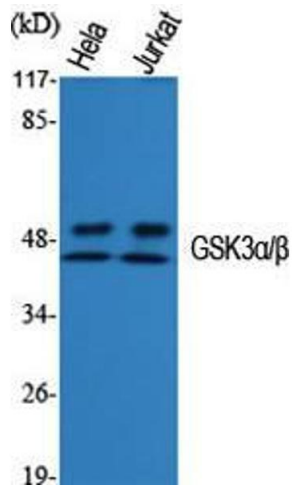
Format:	Liquid
Concentration:	1 mg/mL
Buffer:	Liquid in PBS containing 50 % glycerol, 0.5 % BSA and 0.02 % sodium azide.
Preservative:	Sodium azide
Precaution of Use:	This product contains Sodium azide: a POISONOUS AND HAZARDOUS SUBSTANCE which should be handled by trained staff only.
Handling Advice:	Avoid repeated freeze/thaw cycles.
Storage:	-20 °C
Storage Comment:	Store at -20°C.

## Images



### Western Blotting

Image 1.



### Western Blotting

**Image 2.** Western Blot (WB) analysis of specific cells using GSK3α/β Polyclonal Antibody.