



[Go to Product page](#)

Datasheet for ABIN3184974

## anti-MYST2 antibody (Internal Region)

### 2 Images

#### Overview

Quantity:	100 µL
Target:	MYST2
Binding Specificity:	Internal Region
Reactivity:	Human, Mouse, Rat
Host:	Rabbit
Clonality:	Polyclonal
Conjugate:	This MYST2 antibody is un-conjugated
Application:	Western Blotting (WB), ELISA, Immunofluorescence (IF)

#### Product Details

Immunogen:	Synthesized peptide derived from the Internal region of human HBO1.
Isotype:	IgG
Specificity:	HBO1 Polyclonal Antibody detects endogenous levels of HBO1 protein.
Characteristics:	Rabbit Polyclonal to HBO1.
Purification:	The antibody was affinity-purified from rabbit antiserum by affinity-chromatography using epitope-specific immunogen.

#### Target Details

Target:	MYST2
Alternative Name:	HBO1 ( <a href="#">MYST2 Products</a> )

## Target Details

Molecular Weight:	83 kDa
Gene ID:	11143
UniProt:	<a href="#">O95251</a>

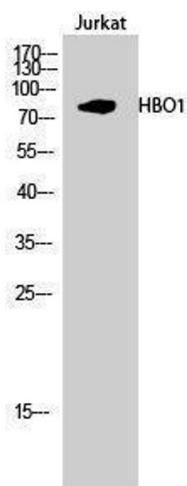
## Application Details

Application Notes:	WB 1:500-1:2000, IF 1:200-1:1000, ELISA 1:20000,
Restrictions:	For Research Use only

## Handling

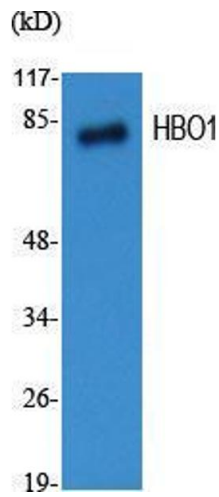
Format:	Liquid
Concentration:	1 mg/mL
Buffer:	Liquid in PBS containing 50 % glycerol, 0.5 % BSA and 0.02 % sodium azide.
Preservative:	Sodium azide
Precaution of Use:	This product contains Sodium azide: a POISONOUS AND HAZARDOUS SUBSTANCE which should be handled by trained staff only.
Handling Advice:	Avoid repeated freeze/thaw cycles.
Storage:	-20 °C
Storage Comment:	Store at -20°C.

## Images



### Western Blotting

Image 1.



### Western Blotting

**Image 2.** Western Blot (WB) analysis of specific cells using HBO1 Polyclonal Antibody.