



Datasheet for ABIN3185019  
**anti-Histone H1 antibody (Lys1535)**



[Go to Product page](#)

2 Images

Overview

Quantity:	100 µL
Target:	Histone H1
Binding Specificity:	Lys1535
Reactivity:	Human, Mouse
Host:	Rabbit
Clonality:	Polyclonal
Conjugate:	This Histone H1 antibody is un-conjugated
Application:	Immunofluorescence (IF), Immunohistochemistry (IHC), Western Blotting (WB), ELISA

Product Details

Immunogen:	Synthesized peptide derived from human Histone H1 around the non-phosphorylation site of T17.
Isotype:	IgG
Specificity:	Histone H1 Polyclonal Antibody detects endogenous levels of Histone H1 protein.
Characteristics:	Rabbit Polyclonal to Histone H1.
Purification:	The antibody was affinity-purified from rabbit antiserum by affinity-chromatography using epitope-specific immunogen.

Target Details

Target:	Histone H1
---------	------------

## Target Details

Abstract:	<a href="#">Histone H1 Products</a>
Molecular Weight:	265 kDa
Gene ID:	3009, 3007, 3008
UniProt:	<a href="#">P16401</a> , <a href="#">P16402</a> , <a href="#">P10412</a>

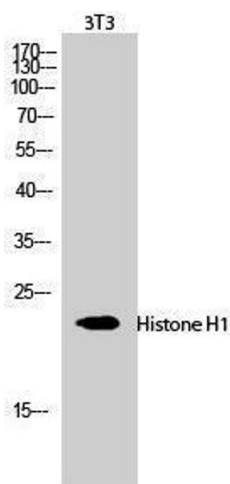
## Application Details

Application Notes:	WB 1:500-1:2000, IHC 1:100-1:300, IF 1:200-1:1000, ELISA 1:20000,
Restrictions:	For Research Use only

## Handling

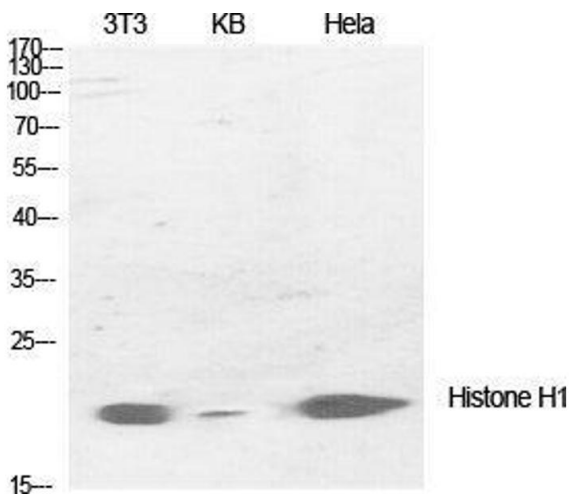
Format:	Liquid
Concentration:	1 mg/mL
Buffer:	Liquid in PBS containing 50 % glycerol, 0.5 % BSA and 0.02 % sodium azide.
Preservative:	Sodium azide
Precaution of Use:	This product contains Sodium azide: a POISONOUS AND HAZARDOUS SUBSTANCE which should be handled by trained staff only.
Handling Advice:	Avoid repeated freeze/thaw cycles.
Storage:	-20 °C
Storage Comment:	Store at -20°C.

## Images



### Western Blotting

Image 1.



### Western Blotting

**Image 2.** Western Blot (WB) analysis of specific cells using Histone H1 Polyclonal Antibody.