

Datasheet for ABIN3185022  
**anti-Histone H2A antibody (Lys338)**



[Go to Product page](#)

1 Image

## Overview

Quantity:	100 µL
Target:	Histone H2A
Binding Specificity:	Lys338
Reactivity:	Human, Rat, Mouse
Host:	Rabbit
Clonality:	Polyclonal
Conjugate:	This Histone H2A antibody is un-conjugated
Application:	Immunohistochemistry (IHC), ELISA

## Product Details

Immunogen:	Synthesized peptide derived from human Histone H2A around the non-phosphorylation site of T121.
Isotype:	IgG
Specificity:	Histone H2A Polyclonal Antibody detects endogenous levels of Histone H2A protein.
Characteristics:	Rabbit Polyclonal to Histone H2A.
Purification:	The antibody was affinity-purified from rabbit antiserum by affinity-chromatography using epitope-specific immunogen.

## Target Details

Target:	Histone H2A
---------	-------------

## Target Details

Abstract:	<a href="#">Histone H2A Products</a>
Molecular Weight:	70 kDa
Gene ID:	8329, 8332, 8336
UniProt:	<a href="#">P0C0S8</a> , <a href="#">P04908</a> , <a href="#">P20671</a> , <a href="#">Q96KK5</a> , <a href="#">Q6F113</a> , <a href="#">Q7L7L0</a>

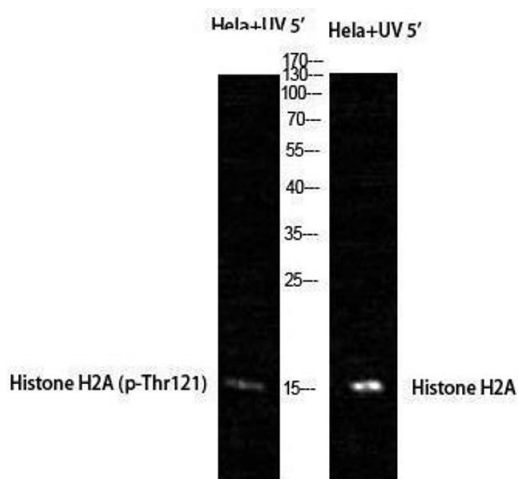
## Application Details

Application Notes:	IHC 1:100-1:300, ELISA 1:5000,
Restrictions:	For Research Use only

## Handling

Format:	Liquid
Concentration:	1 mg/mL
Buffer:	Liquid in PBS containing 50 % glycerol, 0.5 % BSA and 0.02 % sodium azide.
Preservative:	Sodium azide
Precaution of Use:	This product contains Sodium azide: a POISONOUS AND HAZARDOUS SUBSTANCE which should be handled by trained staff only.
Handling Advice:	Avoid repeated freeze/thaw cycles.
Storage:	-20 °C
Storage Comment:	Store at -20°C.

## Images



### Western Blotting

Image 1.