

Datasheet for ABIN3185142

Rabbit anti-Human IgG1 (Internal Region) Antibody[Go to Product page](#)**1** Image

Overview

Quantity:	100 µL
Target:	IgG1
Binding Specificity:	Internal Region
Reactivity:	Human
Host:	Rabbit
Clonality:	Polyclonal
Application:	ELISA, Western Blotting (WB), Immunohistochemistry (IHC)

Product Details

Immunogen:	Synthesized peptide derived from the Internal region of human IgG1.
Isotype:	IgG
Specificity:	IgG1 Polyclonal Antibody detects endogenous levels of IgG1 protein.
Purification:	The antibody was affinity-purified from rabbit antiserum by affinity-chromatography using epitope-specific immunogen.

Target Details

Target:	IgG1
Abstract:	IgG1 Products
Target Type:	Antibody
Molecular Weight:	41 kDa

Target Details

Gene ID: 3500

UniProt: [P01857](#)

Application Details

Application Notes: WB 1:500 - 1:2000
IHC 1:100 - 1:300
ELISA 1:40000

Restrictions: For Research Use only

Handling

Format: Liquid

Concentration: 1 mg/mL

Buffer: PBS containing 50 % glycerol, 0.5 % BSA and 0.02 % sodium azide.

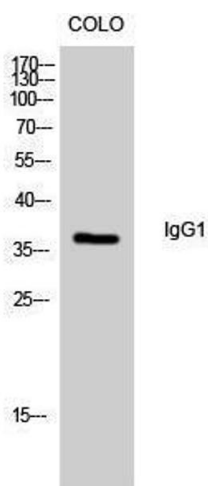
Preservative: Sodium azide

Precaution of Use: This product contains sodium azide: a POISONOUS AND HAZARDOUS SUBSTANCE which should be handled by trained staff only.

Handling Advice: Avoid repeated freeze/thaw cycles.

Storage: -20 °C

Images



Western Blotting

Image 1.