



[Go to Product page](#)

Datasheet for ABIN3185207

anti-Integrin beta 5 antibody (C-Term)

2 Images

Overview

Quantity:	100 µL
Target:	Integrin beta 5 (ITGB5)
Binding Specificity:	C-Term
Reactivity:	Human, Mouse, Rat, Monkey
Host:	Rabbit
Clonality:	Polyclonal
Conjugate:	This Integrin beta 5 antibody is un-conjugated
Application:	Western Blotting (WB), ELISA

Product Details

Immunogen:	Synthesized peptide derived from the C-terminal region of human Integrin beta5.
Isotype:	IgG
Specificity:	Integrin β5 Polyclonal Antibody detects endogenous levels of Integrin β5 protein.
Characteristics:	Rabbit Polyclonal to Integrin β5.
Purification:	The antibody was affinity-purified from rabbit antiserum by affinity-chromatography using epitope-specific immunogen.

Target Details

Target:	Integrin beta 5 (ITGB5)
Alternative Name:	Integrin Beta5 (ITGB5 Products)

Target Details

Molecular Weight: 88 kDa

Gene ID: 3693

UniProt: [P18084](#)

Pathways: [Integrin Complex](#)

Application Details

Application Notes: WB 1:500-1:2000, ELISA 1:20000,

Restrictions: For Research Use only

Handling

Format: Liquid

Concentration: 1 mg/mL

Buffer: Liquid in PBS containing 50 % glycerol, 0.5 % BSA and 0.02 % sodium azide.

Preservative: Sodium azide

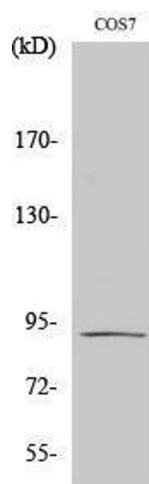
Precaution of Use: This product contains Sodium azide: a POISONOUS AND HAZARDOUS SUBSTANCE which should be handled by trained staff only.

Handling Advice: Avoid repeated freeze/thaw cycles.

Storage: -20 °C

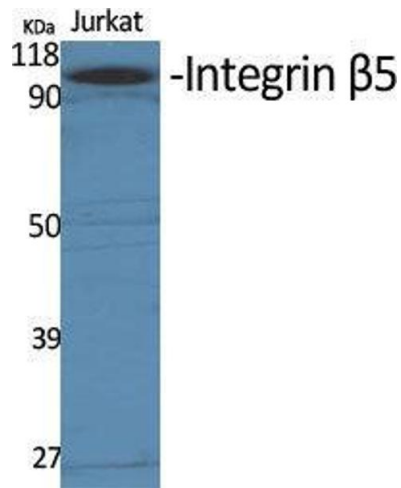
Storage Comment: Store at -20°C.

Images



Western Blotting

Image 1.



Western Blotting

Image 2. Western Blot (WB) analysis of specific cells using Integrin beta5 Polyclonal Antibody.