



[Go to Product page](#)

Datasheet for ABIN3185275
anti-JunD antibody (Ser67)

1 Image

Overview

| | |
|----------------------|--|
| Quantity: | 100 µL |
| Target: | JunD (JUND) |
| Binding Specificity: | Ser67 |
| Reactivity: | Human, Rat, Mouse |
| Host: | Rabbit |
| Clonality: | Polyclonal |
| Conjugate: | This JunD antibody is un-conjugated |
| Application: | Western Blotting (WB), ELISA, Immunohistochemistry (IHC), Immunoprecipitation (IP) |

Product Details

| | |
|------------------|---|
| Immunogen: | Synthesized peptide derived from human Jun D around the non-phosphorylation site of S255. |
| Isotype: | IgG |
| Specificity: | Jun D Polyclonal Antibody detects endogenous levels of Jun D protein. |
| Characteristics: | Rabbit Polyclonal to Jun D. |
| Purification: | The antibody was affinity-purified from rabbit antiserum by affinity-chromatography using epitope-specific immunogen. |

Target Details

| | |
|-------------------|---|
| Target: | JunD (JUND) |
| Alternative Name: | Jun D (JUND Products) |

Target Details

Molecular Weight: 38 kDa

Gene ID: 3727

UniProt: [P17535](#)

Application Details

Application Notes: WB 1:500-1:2000, IHC 1:100-1:300, IP 1:200-500, ELISA 1:20000,

Restrictions: For Research Use only

Handling

Format: Liquid

Concentration: 1 mg/mL

Buffer: Liquid in PBS containing 50 % glycerol, 0.5 % BSA and 0.02 % sodium azide.

Preservative: Sodium azide

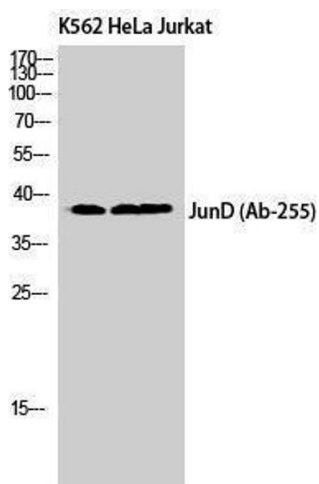
Precaution of Use: This product contains Sodium azide: a POISONOUS AND HAZARDOUS SUBSTANCE which should be handled by trained staff only.

Handling Advice: Avoid repeated freeze/thaw cycles.

Storage: -20 °C

Storage Comment: Store at -20°C.

Images



Western Blotting

Image 1.