



[Go to Product page](#)

Datasheet for ABIN3185290

## anti-KDEL3 antibody (Internal Region)

### 1 Image

#### Overview

Quantity:	100 µL
Target:	KDEL3 (kDEL3)
Binding Specificity:	Internal Region
Reactivity:	Human, Mouse
Host:	Rabbit
Clonality:	Polyclonal
Conjugate:	This KDEL3 antibody is un-conjugated
Application:	Western Blotting (WB), ELISA, Immunohistochemistry (IHC)

#### Product Details

Immunogen:	Synthesized peptide derived from the Internal region of human KDEL Receptor 3.
Isotype:	IgG
Specificity:	KDEL Receptor 3 Polyclonal Antibody detects endogenous levels of KDEL Receptor 3 protein.
Characteristics:	Rabbit Polyclonal to KDEL Receptor 3.
Purification:	The antibody was affinity-purified from rabbit antiserum by affinity-chromatography using epitope-specific immunogen.

#### Target Details

Target:	KDEL3 (kDEL3)
Alternative Name:	KDEL Receptor 3 ( <a href="#">kDEL3 Products</a> )

## Target Details

Molecular Weight: 28 kDa

Gene ID: 11015

UniProt: [O43731](#)

Pathways: [ER-Nucleus Signaling](#), [Maintenance of Protein Location](#)

## Application Details

Application Notes: WB 1:500-1:2000, IHC 1:100-1:300, ELISA 1:20000,

Restrictions: For Research Use only

## Handling

Format: Liquid

Concentration: 1 mg/mL

Buffer: Liquid in PBS containing 50 % glycerol, 0.5 % BSA and 0.02 % sodium azide.

Preservative: Sodium azide

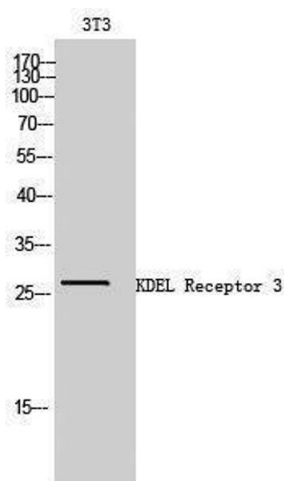
Precaution of Use: This product contains Sodium azide: a POISONOUS AND HAZARDOUS SUBSTANCE which should be handled by trained staff only.

Handling Advice: Avoid repeated freeze/thaw cycles.

Storage: -20 °C

Storage Comment: Store at -20°C.

## Images



### Western Blotting

Image 1.