

Datasheet for ABIN3185358
anti-ARHGEF12 antibody (Internal Region)[Go to Product page](#)

1 Image

Overview

Quantity:	100 µL
Target:	ARHGEF12
Binding Specificity:	Internal Region
Reactivity:	Human, Mouse, Rat
Host:	Rabbit
Clonality:	Polyclonal
Conjugate:	This ARHGEF12 antibody is un-conjugated
Application:	ELISA, Western Blotting (WB)

Product Details

Immunogen:	Synthesized peptide derived from the Internal region of human LARG.
Isotype:	IgG
Specificity:	LARG Polyclonal Antibody detects endogenous levels of LARG protein.
Characteristics:	Rabbit Polyclonal to LARG.
Purification:	The antibody was affinity-purified from rabbit antiserum by affinity-chromatography using epitope-specific immunogen.

Target Details

Target:	ARHGEF12
Alternative Name:	LARG (ARHGEF12 Products)

Target Details

Molecular Weight:	173 kDa
Gene ID:	23365
UniProt:	Q9NZN5
Pathways:	Neurotrophin Signaling Pathway , Regulation of G-Protein Coupled Receptor Protein Signaling

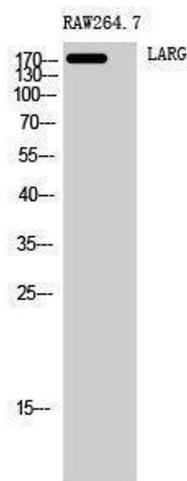
Application Details

Application Notes:	WB 1:500-1:2000, ELISA 1:20000,
Restrictions:	For Research Use only

Handling

Format:	Liquid
Concentration:	1 mg/mL
Buffer:	Liquid in PBS containing 50 % glycerol, 0.5 % BSA and 0.02 % sodium azide.
Preservative:	Sodium azide
Precaution of Use:	This product contains Sodium azide: a POISONOUS AND HAZARDOUS SUBSTANCE which should be handled by trained staff only.
Handling Advice:	Avoid repeated freeze/thaw cycles.
Storage:	-20 °C
Storage Comment:	Store at -20°C.

Images



Western Blotting

Image 1.