



[Go to Product page](#)

Datasheet for ABIN3185377

## anti-ARHGEF2 antibody (Tyr427)

### 2 Images

#### Overview

Quantity:	100 µL
Target:	ARHGEF2
Binding Specificity:	Tyr427
Reactivity:	Human, Mouse, Rat
Host:	Rabbit
Clonality:	Polyclonal
Application:	Western Blotting (WB), ELISA

#### Product Details

Immunogen:	Synthesized peptide derived from human Lfc around the non-phosphorylation site of S885.
Isotype:	IgG
Specificity:	Lfc Polyclonal Antibody detects endogenous levels of Lfc protein.
Characteristics:	Rabbit Polyclonal to Lfc.
Purification:	The antibody was affinity-purified from rabbit antiserum by affinity-chromatography using epitope-specific immunogen.

#### Target Details

Target:	ARHGEF2
Alternative Name:	Lfc ( <a href="#">ARHGEF2 Products</a> )
Molecular Weight:	70 kDa

## Target Details

Gene ID:	9181
UniProt:	<a href="#">Q92974</a>
Pathways:	<a href="#">Negative Regulation of intrinsic apoptotic Signaling</a>

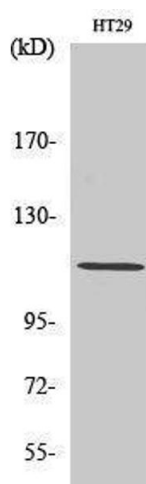
## Application Details

Application Notes:	WB 1:500-1:2000, ELISA 1:5000,
Restrictions:	For Research Use only

## Handling

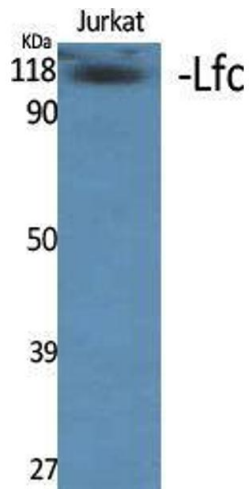
Format:	Liquid
Concentration:	1 mg/mL
Buffer:	Liquid in PBS containing 50 % glycerol, 0.5 % BSA and 0.02 % sodium azide.
Preservative:	Sodium azide
Precaution of Use:	This product contains Sodium azide: a POISONOUS AND HAZARDOUS SUBSTANCE which should be handled by trained staff only.
Handling Advice:	Avoid repeated freeze/thaw cycles.
Storage:	-20 °C
Storage Comment:	Store at -20°C.

## Images



### Western Blotting

Image 1.



### Western Blotting

**Image 2.** Western Blot (WB) analysis of specific cells using Lfc Polyclonal Antibody.