



Datasheet for ABIN3185379
anti-LHCGR antibody (C-Term)



[Go to Product page](#)

1 Image

Overview

Quantity:	100 µL
Target:	LHCGR
Binding Specificity:	C-Term
Reactivity:	Human, Rat, Mouse
Host:	Rabbit
Clonality:	Polyclonal
Conjugate:	This LHCGR antibody is un-conjugated
Application:	Western Blotting (WB), Immunofluorescence (IF), ELISA

Product Details

Immunogen:	Synthesized peptide derived from the C-terminal region of human LHR.
Isotype:	IgG
Specificity:	LHR Polyclonal Antibody detects endogenous levels of LHR protein.
Characteristics:	Rabbit Polyclonal to LHR.
Purification:	The antibody was affinity-purified from rabbit antiserum by affinity-chromatography using epitope-specific immunogen.

Target Details

Target:	LHCGR
Alternative Name:	LHR (LHCGR Products)

Target Details

Molecular Weight: 80 kDa

Gene ID: 3973

UniProt: [P22888](#)

Pathways: [Regulation of Hormone Metabolic Process](#), [Regulation of Hormone Biosynthetic Process](#), [cAMP Metabolic Process](#), [Glycosaminoglycan Metabolic Process](#), [Regulation of Carbohydrate Metabolic Process](#), [Autophagy](#), [Negative Regulation of intrinsic apoptotic Signaling](#)

Application Details

Application Notes: WB 1:500-1:2000, IF 1:200-1:1000, ELISA 1:10000,

Restrictions: For Research Use only

Handling

Format: Liquid

Concentration: 1 mg/mL

Buffer: Liquid in PBS containing 50 % glycerol, 0.5 % BSA and 0.02 % sodium azide.

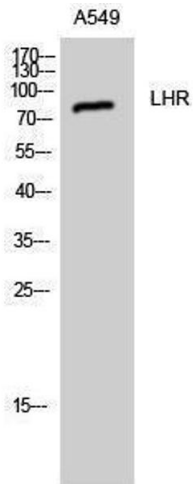
Preservative: Sodium azide

Precaution of Use: This product contains Sodium azide: a POISONOUS AND HAZARDOUS SUBSTANCE which should be handled by trained staff only.

Handling Advice: Avoid repeated freeze/thaw cycles.

Storage: -20 °C

Storage Comment: Store at -20°C.



Western Blotting

Image 1.