

Datasheet for ABIN3185463  
**anti-MARK1/2/3/4 antibody (Lys16)**



[Go to Product page](#)

1 Image

## Overview

Quantity:	100 µL
Target:	MARK1/2/3/4
Binding Specificity:	Lys16
Reactivity:	Human, Mouse, Rat, Monkey
Host:	Rabbit
Clonality:	Polyclonal
Conjugate:	This MARK1/2/3/4 antibody is un-conjugated
Application:	ELISA, Western Blotting (WB), Immunohistochemistry (IHC), Immunofluorescence (IF)

## Product Details

Immunogen:	Synthesized peptide derived from human MARK1/2/3/4 around the non-phosphorylation site of T215.
Isotype:	IgG
Specificity:	MARK1/2/3/4 Polyclonal Antibody detects endogenous levels of MARK1/2/3/4 protein.
Characteristics:	Rabbit Polyclonal to MARK1/2/3/4.
Purification:	The antibody was affinity-purified from rabbit antiserum by affinity-chromatography using epitope-specific immunogen.

## Target Details

Target:	MARK1/2/3/4
---------	-------------

## Target Details

Alternative Name: MARK1/2/3/4 ([MARK1/2/3/4 Products](#))

Molecular Weight: 11 kDa

Gene ID: 4139, 2011, 4140

UniProt: [Q9P0L2](#), [Q7KZI7](#), [P27448](#), [Q96L34](#)

## Application Details

Application Notes: WB 1:500-1:2000, IHC 1:100-1:300, IF 1:200-1:1000, ELISA 1:10000,

Restrictions: For Research Use only

## Handling

Format: Liquid

Concentration: 1 mg/mL

Buffer: Liquid in PBS containing 50 % glycerol, 0.5 % BSA and 0.02 % sodium azide.

Preservative: Sodium azide

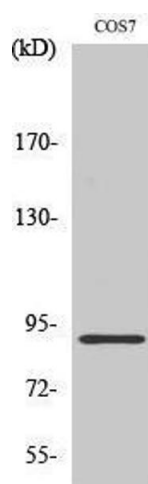
Precaution of Use: This product contains Sodium azide: a POISONOUS AND HAZARDOUS SUBSTANCE which should be handled by trained staff only.

Handling Advice: Avoid repeated freeze/thaw cycles.

Storage: -20 °C

Storage Comment: Store at -20°C.

## Images



### Western Blotting

Image 1.