



Datasheet for ABIN3185512

anti-MEF2BNB-MEF2B Readthrough (MEF2BNB-MEF2B) (Internal Region) antibody



[Go to Product page](#)

1 Image

Overview

Quantity:	100 µL
Target:	MEF2BNB-MEF2B Readthrough (MEF2BNB-MEF2B)
Binding Specificity:	Internal Region
Reactivity:	Human, Mouse
Host:	Rabbit
Clonality:	Polyclonal
Conjugate:	Un-conjugated
Application:	ELISA, Western Blotting (WB), Immunohistochemistry (IHC)

Product Details

Immunogen:	Synthesized peptide derived from the Internal region of human MEF-2B.
Isotype:	IgG
Specificity:	MEF-2B Polyclonal Antibody detects endogenous levels of MEF-2B protein.
Characteristics:	Rabbit Polyclonal to MEF-2B.
Purification:	The antibody was affinity-purified from rabbit antiserum by affinity-chromatography using epitope-specific immunogen.

Target Details

Target:	MEF2BNB-MEF2B Readthrough (MEF2BNB-MEF2B)
Alternative Name:	MEF-2B (MEF2BNB-MEF2B Products)

Target Details

Molecular Weight: 38 kDa

Gene ID: 4207

UniProt: [Q02080](#)

Application Details

Application Notes: WB 1:500-1:2000, IHC 1:100-1:300, ELISA 1:10000,

Restrictions: For Research Use only

Handling

Format: Liquid

Concentration: 1 mg/mL

Buffer: Liquid in PBS containing 50 % glycerol, 0.5 % BSA and 0.02 % sodium azide.

Preservative: Sodium azide

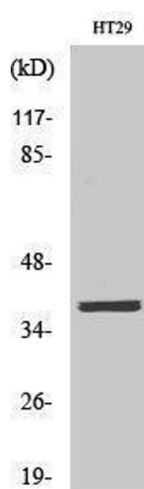
Precaution of Use: This product contains Sodium azide: a POISONOUS AND HAZARDOUS SUBSTANCE which should be handled by trained staff only.

Handling Advice: Avoid repeated freeze/thaw cycles.

Storage: -20 °C

Storage Comment: Store at -20°C.

Images



Western Blotting

Image 1.