



[Go to Product page](#)

Datasheet for ABIN3185517  
**anti-MEIS1 antibody (Internal Region)**

1 Image

Overview

Quantity:	100 µL
Target:	MEIS1
Binding Specificity:	Internal Region
Reactivity:	Human, Mouse
Host:	Rabbit
Clonality:	Polyclonal
Conjugate:	This MEIS1 antibody is un-conjugated
Application:	ELISA, Western Blotting (WB)

Product Details

Immunogen:	Synthesized peptide derived from the Internal region of human Meis1.
Isotype:	IgG
Specificity:	Meis1 Polyclonal Antibody detects endogenous levels of Meis1 protein.
Characteristics:	Rabbit Polyclonal to Meis1.
Purification:	The antibody was affinity-purified from rabbit antiserum by affinity-chromatography using epitope-specific immunogen.

Target Details

Target:	MEIS1
Alternative Name:	Meis1 ( <a href="#">MEIS1 Products</a> )

## Target Details

Molecular Weight: 37 kDa

Gene ID: 4211

UniProt: [O00470](#)

Pathways: [Chromatin Binding](#)

## Application Details

Application Notes: WB 1:500-1:2000, ELISA 1:40000,

Restrictions: For Research Use only

## Handling

Format: Liquid

Concentration: 1 mg/mL

Buffer: Liquid in PBS containing 50 % glycerol, 0.5 % BSA and 0.02 % sodium azide.

Preservative: Sodium azide

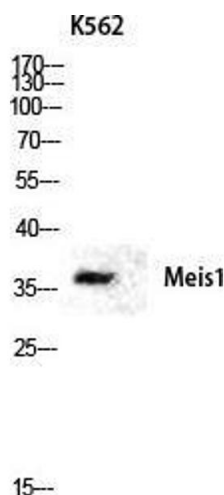
Precaution of Use: This product contains Sodium azide: a POISONOUS AND HAZARDOUS SUBSTANCE which should be handled by trained staff only.

Handling Advice: Avoid repeated freeze/thaw cycles.

Storage: -20 °C

Storage Comment: Store at -20°C.

## Images



### Western Blotting

**Image 1.** Western Blot (WB) analysis of K562 lysis using Meis1 antibody.