



[Go to Product page](#)

Datasheet for ABIN3185524
anti-MEK1/2 antibody (Ser112)

2 Images

Overview

Quantity:	100 µL
Target:	MEK1/2 (MAP2K1/2)
Binding Specificity:	Ser112
Reactivity:	Human, Mouse, Rat
Host:	Rabbit
Clonality:	Polyclonal
Conjugate:	This MEK1/2 antibody is un-conjugated
Application:	Western Blotting (WB), ELISA, Immunohistochemistry (IHC)

Product Details

Immunogen:	Synthesized peptide derived from human MEK-1/2 around the non-phosphorylation site of S222/226.
Isotype:	IgG
Specificity:	MEK-1/2 Polyclonal Antibody detects endogenous levels of MEK-1/2 protein.
Characteristics:	Rabbit Polyclonal to MEK-1/2.
Purification:	The antibody was affinity-purified from rabbit antiserum by affinity-chromatography using epitope-specific immunogen.

Target Details

Target:	MEK1/2 (MAP2K1/2)
---------	-------------------

Target Details

Alternative Name:	MEK-1/2 (MAP2K1/2 Products)
Molecular Weight:	24 kDa
Gene ID:	5604, 5605
UniProt:	Q02750 , P36507

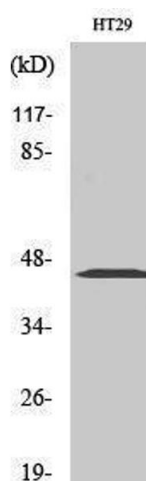
Application Details

Application Notes:	WB 1:500-1:2000, IHC 1:100-1:300, ELISA 1:20000,
Restrictions:	For Research Use only

Handling

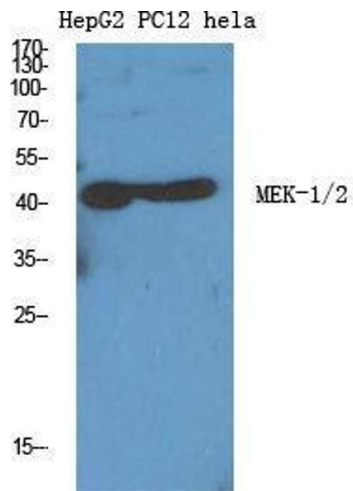
Format:	Liquid
Concentration:	1 mg/mL
Buffer:	Liquid in PBS containing 50 % glycerol, 0.5 % BSA and 0.02 % sodium azide.
Preservative:	Sodium azide
Precaution of Use:	This product contains Sodium azide: a POISONOUS AND HAZARDOUS SUBSTANCE which should be handled by trained staff only.
Handling Advice:	Avoid repeated freeze/thaw cycles.
Storage:	-20 °C
Storage Comment:	Store at -20°C.

Images



Western Blotting

Image 1.



Western Blotting

Image 2. Western Blot (WB) analysis of specific cells using MEK-1/2 Polyclonal Antibody.