



Datasheet for ABIN3185574
anti-MKP-1/2 antibody (Lys92)



[Go to Product page](#)

4 Images

Overview

Quantity:	100 µL
Target:	MKP-1/2 (DUSP1/4)
Binding Specificity:	Lys92
Reactivity:	Human, Mouse, Rat
Host:	Rabbit
Clonality:	Polyclonal
Conjugate:	This MKP-1/2 antibody is un-conjugated
Application:	Western Blotting (WB), Immunohistochemistry (IHC), ELISA

Product Details

Immunogen:	Synthesized peptide derived from human MKP-1/2 around the non-phosphorylation site of S296/318.
Isotype:	IgG
Specificity:	MKP-1/2 Polyclonal Antibody detects endogenous levels of MKP-1/2 protein.
Characteristics:	Rabbit Polyclonal to MKP-1/2.
Purification:	The antibody was affinity-purified from rabbit antiserum by affinity-chromatography using epitope-specific immunogen.

Target Details

Target:	MKP-1/2 (DUSP1/4)
---------	-------------------

Target Details

Alternative Name: MKP-1/2 ([DUSP1/4 Products](#))

Molecular Weight: 11 kDa

Gene ID: 1843, 1846

UniProt: [P28562, Q13115](#)

Application Details

Application Notes: WB 1:500-1:2000, IHC 1:100-1:300, ELISA 1:20000,

Restrictions: For Research Use only

Handling

Format: Liquid

Concentration: 1 mg/mL

Buffer: Liquid in PBS containing 50 % glycerol, 0.5 % BSA and 0.02 % sodium azide.

Preservative: Sodium azide

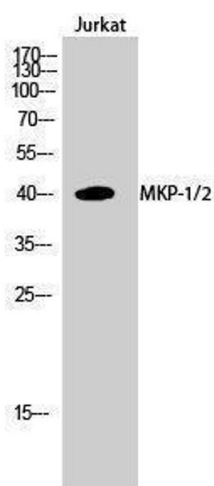
Precaution of Use: This product contains Sodium azide: a POISONOUS AND HAZARDOUS SUBSTANCE which should be handled by trained staff only.

Handling Advice: Avoid repeated freeze/thaw cycles.

Storage: -20 °C

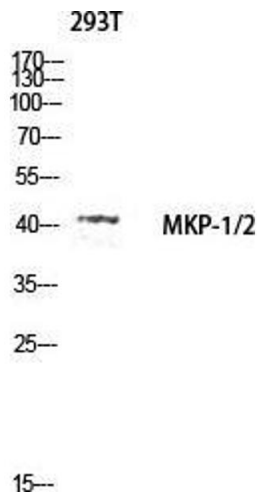
Storage Comment: Store at -20°C.

Images



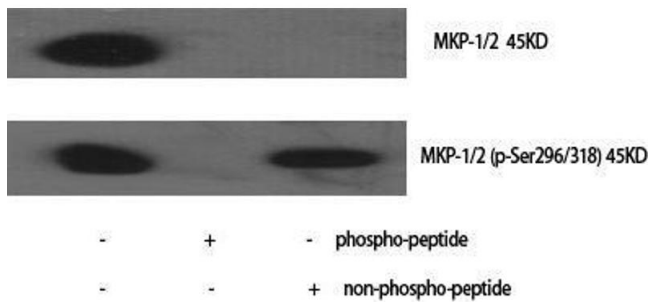
Western Blotting

Image 1.



Western Blotting

Image 2. Western Blot (WB) analysis of 293T lysis using MKP-1/2 antibody.



Western Blotting

Image 3. Western Blot (WB) analysis of specific cells using MKP-1/2 Polyclonal Antibody.

Please check the [product details page](#) for more images. Overall 4 images are available for ABIN3185574.