



[Go to Product page](#)

Datasheet for ABIN3185602
anti-C1orf35 antibody (N-Term)

1 Image

Overview

| | |
|----------------------|--|
| Quantity: | 100 µL |
| Target: | C1orf35 |
| Binding Specificity: | N-Term |
| Reactivity: | Human, Mouse, Rat |
| Host: | Rabbit |
| Clonality: | Polyclonal |
| Conjugate: | This C1orf35 antibody is un-conjugated |
| Application: | Western Blotting (WB), ELISA |

Product Details

| | |
|------------------|---|
| Immunogen: | Synthesized peptide derived from the N-terminal region of human MMTAG2. |
| Isotype: | IgG |
| Specificity: | MMTAG2 Polyclonal Antibody detects endogenous levels of MMTAG2 protein. |
| Characteristics: | Rabbit Polyclonal to MMTAG2. |
| Purification: | The antibody was affinity-purified from rabbit antiserum by affinity-chromatography using epitope-specific immunogen. |

Target Details

| | |
|-------------------|---|
| Target: | C1orf35 |
| Alternative Name: | MMTAG2 (C1orf35 Products) |

Target Details

Molecular Weight: 34 kDa

Gene ID: 79169

UniProt: [Q9BU76](#)

Application Details

Application Notes: WB 1:500-1:2000, ELISA 1:5000,

Restrictions: For Research Use only

Handling

Format: Liquid

Concentration: 1 mg/mL

Buffer: Liquid in PBS containing 50 % glycerol, 0.5 % BSA and 0.02 % sodium azide.

Preservative: Sodium azide

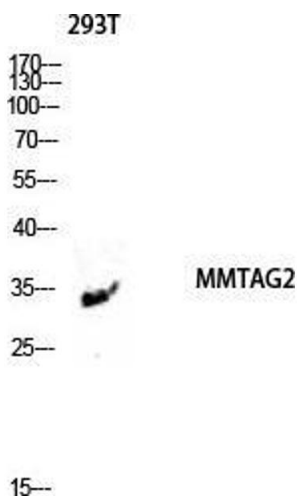
Precaution of Use: This product contains Sodium azide: a POISONOUS AND HAZARDOUS SUBSTANCE which should be handled by trained staff only.

Handling Advice: Avoid repeated freeze/thaw cycles.

Storage: -20 °C

Storage Comment: Store at -20°C.

Images



Western Blotting

Image 1. Western Blot (WB) analysis of 293T lysis using MMTAG2 antibody.