



Datasheet for ABIN3185627
anti-Mre11 antibody (Ser916)



[Go to Product page](#)

2 Images

Overview

Quantity:	100 µL
Target:	Mre11 (MRE11A)
Binding Specificity:	Ser916
Reactivity:	Human, Rat, Mouse, Monkey
Host:	Rabbit
Clonality:	Polyclonal
Conjugate:	This Mre11 antibody is un-conjugated
Application:	Western Blotting (WB), ELISA, Immunohistochemistry (IHC)

Product Details

Immunogen:	Synthesized peptide derived from human MRE11 around the non-phosphorylation site of S264.
Isotype:	IgG
Specificity:	MRE11 Polyclonal Antibody detects endogenous levels of MRE11 protein.
Characteristics:	Rabbit Polyclonal to MRE11.
Purification:	The antibody was affinity-purified from rabbit antiserum by affinity-chromatography using epitope-specific immunogen.

Target Details

Target:	Mre11 (MRE11A)
Alternative Name:	MRE11 (MRE11A Products)

Target Details

Molecular Weight:	55/85 kDa
Gene ID:	4361
UniProt:	P49959
Pathways:	DNA Damage Repair

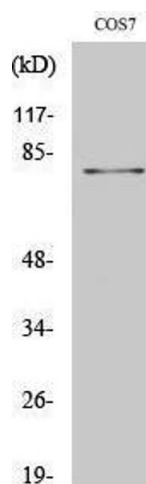
Application Details

Application Notes:	WB 1:500-1:2000, IHC 1:100-1:300, ELISA 1:20000,
Restrictions:	For Research Use only

Handling

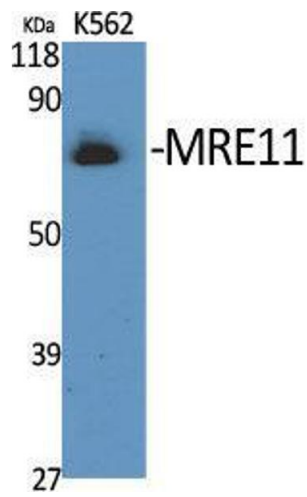
Format:	Liquid
Concentration:	1 mg/mL
Buffer:	Liquid in PBS containing 50 % glycerol, 0.5 % BSA and 0.02 % sodium azide.
Preservative:	Sodium azide
Precaution of Use:	This product contains Sodium azide: a POISONOUS AND HAZARDOUS SUBSTANCE which should be handled by trained staff only.
Handling Advice:	Avoid repeated freeze/thaw cycles.
Storage:	-20 °C
Storage Comment:	Store at -20°C.

Images



Western Blotting

Image 1.



Western Blotting

Image 2. Western Blot (WB) analysis of specific cells using MRE11 Polyclonal Antibody.