



Datasheet for ABIN3185745  
**anti-PPP1R12A antibody (Thr103)**



[Go to Product page](#)

2 Images

Overview

Quantity:	100 µL
Target:	PPP1R12A
Binding Specificity:	Thr103
Reactivity:	Human, Mouse, Rat, Monkey
Host:	Rabbit
Clonality:	Polyclonal
Conjugate:	This PPP1R12A antibody is un-conjugated
Application:	Western Blotting (WB), Immunohistochemistry (IHC), ELISA

Product Details

Immunogen:	Synthesized peptide derived from human MYPT1 around the non-phosphorylation site of T696.
Isotype:	IgG
Specificity:	MYPT1 Polyclonal Antibody detects endogenous levels of MYPT1 protein.
Characteristics:	Rabbit Polyclonal to MYPT1.
Purification:	The antibody was affinity-purified from rabbit antiserum by affinity-chromatography using epitope-specific immunogen.

Target Details

Target:	PPP1R12A
Alternative Name:	MYPT1 ( <a href="#">PPP1R12A Products</a> )

## Target Details

Molecular Weight: 113/78 kDa

Gene ID: 4659

UniProt: [O14974](#)

Pathways: [M Phase](#)

## Application Details

Application Notes: WB 1:500-1:2000, IHC 1:100-1:300, ELISA 1:5000,

Restrictions: For Research Use only

## Handling

Format: Liquid

Concentration: 1 mg/mL

Buffer: Liquid in PBS containing 50 % glycerol, 0.5 % BSA and 0.02 % sodium azide.

Preservative: Sodium azide

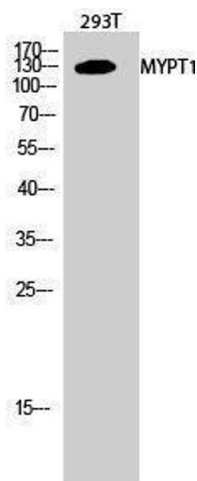
Precaution of Use: This product contains Sodium azide: a POISONOUS AND HAZARDOUS SUBSTANCE which should be handled by trained staff only.

Handling Advice: Avoid repeated freeze/thaw cycles.

Storage: -20 °C

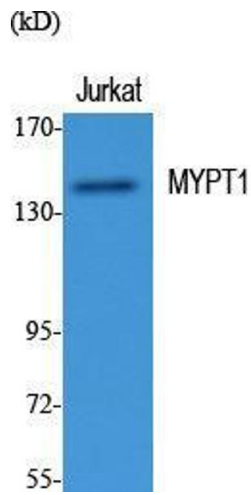
Storage Comment: Store at -20°C.

## Images



### Western Blotting

Image 1.



### Western Blotting

**Image 2.** Western Blot (WB) analysis of specific cells using MYPT1 Polyclonal Antibody.