



[Go to Product page](#)

Datasheet for ABIN3185760  
**anti-ATP1A1 antibody (Ser16)**

2 Images

Overview

Quantity:	100 µL
Target:	ATP1A1
Binding Specificity:	Ser16
Reactivity:	Human, Rat, Mouse
Host:	Rabbit
Clonality:	Polyclonal
Conjugate:	This ATP1A1 antibody is un-conjugated
Application:	Western Blotting (WB), ELISA, Immunohistochemistry (IHC), Immunofluorescence (IF)

Product Details

Immunogen:	Synthesized peptide derived from human Na <sup>+</sup> /K <sup>+</sup> -ATPase alpha1 around the non-phosphorylation site of S16.
Isotype:	IgG
Specificity:	Na <sup>+</sup> /K <sup>+</sup> -ATPase α1 Polyclonal Antibody detects endogenous levels of Na <sup>+</sup> /K <sup>+</sup> -ATPase α1 protein.
Characteristics:	Rabbit Polyclonal to Na <sup>+</sup> /K <sup>+</sup> -ATPase α1.
Purification:	The antibody was affinity-purified from rabbit antiserum by affinity-chromatography using epitope-specific immunogen.

Target Details

Target:	ATP1A1
---------	--------

## Target Details

---

Alternative Name:	Na <sup>+</sup> /K <sup>+</sup> -ATPase Alpha1 ( <a href="#">ATP1A1 Products</a> )
Molecular Weight:	41 kDa
Gene ID:	476
UniProt:	<a href="#">P05023</a>
Pathways:	<a href="#">Thyroid Hormone Synthesis</a> , <a href="#">Regulation of Hormone Metabolic Process</a> , <a href="#">Regulation of Hormone Biosynthetic Process</a> , <a href="#">Proton Transport</a> , <a href="#">Ribonucleoside Biosynthetic Process</a>

## Application Details

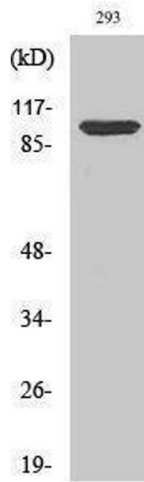
---

Application Notes:	WB 1:500-1:2000, IHC 1:100-1:300, IF 1:200-1:1000, ELISA 1:10000,
Restrictions:	For Research Use only

## Handling

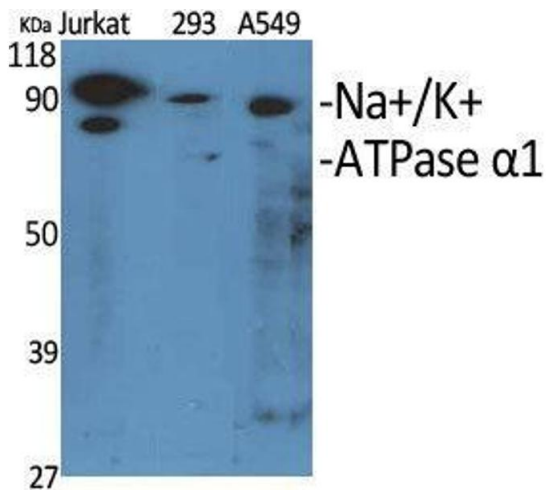
---

Format:	Liquid
Concentration:	1 mg/mL
Buffer:	Liquid in PBS containing 50 % glycerol, 0.5 % BSA and 0.02 % sodium azide.
Preservative:	Sodium azide
Precaution of Use:	This product contains Sodium azide: a POISONOUS AND HAZARDOUS SUBSTANCE which should be handled by trained staff only.
Handling Advice:	Avoid repeated freeze/thaw cycles.
Storage:	-20 °C
Storage Comment:	Store at -20°C.



### Western Blotting

Image 1.



### Western Blotting

Image 2. Western Blot (WB) analysis of specific cells using Na<sup>+</sup>/K<sup>+</sup>-ATPase alpha1 Polyclonal Antibody.