

Datasheet for ABIN3185774
anti-N-Cadherin antibody (C-Term)



[Go to Product page](#)

2 Images

Overview

Quantity:	100 µL
Target:	N-Cadherin (CDH2)
Binding Specificity:	C-Term
Reactivity:	Human, Mouse, Rat
Host:	Rabbit
Clonality:	Polyclonal
Conjugate:	This N-Cadherin antibody is un-conjugated
Application:	Western Blotting (WB), Immunohistochemistry (IHC), Immunofluorescence (IF), ELISA

Product Details

Immunogen:	Synthesized peptide derived from the C-terminal region of human N-cadherin.
Isotype:	IgG
Specificity:	N-cadherin Polyclonal Antibody detects endogenous levels of N-cadherin protein.
Characteristics:	Rabbit Polyclonal to N-cadherin.
Purification:	The antibody was affinity-purified from rabbit antiserum by affinity-chromatography using epitope-specific immunogen.

Target Details

Target:	N-Cadherin (CDH2)
Alternative Name:	N-Cadherin (CDH2 Products)

Target Details

Molecular Weight:	130 kDa
Gene ID:	1000
UniProt:	P19022
Pathways:	Regulation of Muscle Cell Differentiation , Cell-Cell Junction Organization , Synaptic Membrane

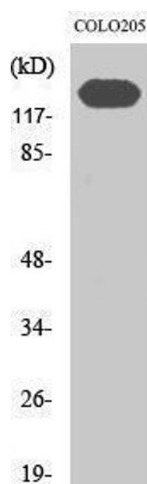
Application Details

Application Notes:	WB 1:500-1:2000, IHC 1:100-1:300, IF 1:200-1:1000, ELISA 1:10000,
Restrictions:	For Research Use only

Handling

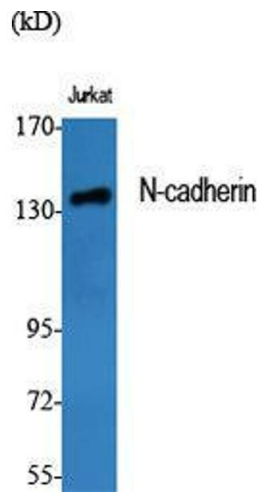
Format:	Liquid
Concentration:	1 mg/mL
Buffer:	Liquid in PBS containing 50 % glycerol, 0.5 % BSA and 0.02 % sodium azide.
Preservative:	Sodium azide
Precaution of Use:	This product contains Sodium azide: a POISONOUS AND HAZARDOUS SUBSTANCE which should be handled by trained staff only.
Handling Advice:	Avoid repeated freeze/thaw cycles.
Storage:	-20 °C
Storage Comment:	Store at -20°C.

Images



Western Blotting

Image 1.



Western Blotting

Image 2. Western Blot (WB) analysis of specific cells using N-cadherin Polyclonal Antibody.