

Datasheet for ABIN3185898

## anti-SLC9A6 antibody (Internal Region)



[Go to Product page](#)

### 1 Image

#### Overview

Quantity:	100 µL
Target:	SLC9A6
Binding Specificity:	Internal Region
Reactivity:	Human, Mouse
Host:	Rabbit
Clonality:	Polyclonal
Conjugate:	This SLC9A6 antibody is un-conjugated
Application:	Western Blotting (WB), ELISA

#### Product Details

Immunogen:	Synthesized peptide derived from the Internal region of human NHE-6.
Isotype:	IgG
Specificity:	NHE-6 Polyclonal Antibody detects endogenous levels of NHE-6 protein.
Characteristics:	Rabbit Polyclonal to NHE-6.
Purification:	The antibody was affinity-purified from rabbit antiserum by affinity-chromatography using epitope-specific immunogen.

#### Target Details

Target:	SLC9A6
Alternative Name:	NHE-6 ( <a href="#">SLC9A6 Products</a> )

## Target Details

Molecular Weight:	75 kDa
Gene ID:	10479
UniProt:	<a href="#">Q92581</a>

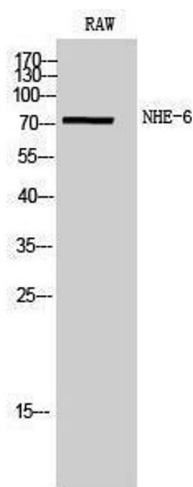
## Application Details

Application Notes:	WB 1:500-1:2000, ELISA 1:40000,
Restrictions:	For Research Use only

## Handling

Format:	Liquid
Concentration:	1 mg/mL
Buffer:	Liquid in PBS containing 50 % glycerol, 0.5 % BSA and 0.02 % sodium azide.
Preservative:	Sodium azide
Precaution of Use:	This product contains Sodium azide: a POISONOUS AND HAZARDOUS SUBSTANCE which should be handled by trained staff only.
Handling Advice:	Avoid repeated freeze/thaw cycles.
Storage:	-20 °C
Storage Comment:	Store at -20°C.

## Images



### Western Blotting

Image 1.