



[Go to Product page](#)

Datasheet for ABIN3186130

anti-OR52E1 antibody (Internal Region)

1 Image

Overview

Quantity:	100 µL
Target:	OR52E1
Binding Specificity:	Internal Region
Reactivity:	Human, Monkey
Host:	Rabbit
Clonality:	Polyclonal
Conjugate:	This OR52E1 antibody is un-conjugated
Application:	ELISA, Western Blotting (WB), Immunofluorescence (IF)

Product Details

Immunogen:	Synthesized peptide derived from the Internal region of human Olfactory receptor 52E1.
Isotype:	IgG
Specificity:	Olfactory receptor 52E1 Polyclonal Antibody detects endogenous levels of Olfactory receptor 52E1 protein.
Characteristics:	Rabbit Polyclonal to Olfactory receptor 52E1.
Purification:	The antibody was affinity-purified from rabbit antiserum by affinity-chromatography using epitope-specific immunogen.

Target Details

Target:	OR52E1
---------	--------

Target Details

Alternative Name:	Olfactory Receptor 52E1 (OR52E1 Products)
Molecular Weight:	35 kDa
Gene ID:	79296
UniProt:	Q8NGJ3

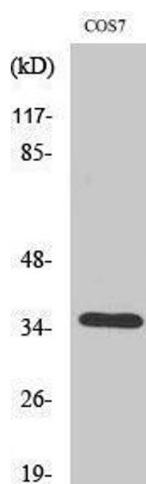
Application Details

Application Notes:	WB 1:500-1:2000, IF 1:200-1:1000, ELISA 1:5000,
Restrictions:	For Research Use only

Handling

Format:	Liquid
Concentration:	1 mg/mL
Buffer:	Liquid in PBS containing 50 % glycerol, 0.5 % BSA and 0.02 % sodium azide.
Preservative:	Sodium azide
Precaution of Use:	This product contains Sodium azide: a POISONOUS AND HAZARDOUS SUBSTANCE which should be handled by trained staff only.
Handling Advice:	Avoid repeated freeze/thaw cycles.
Storage:	-20 °C
Storage Comment:	Store at -20°C.

Images



Western Blotting

Image 1.