

Datasheet for ABIN3186304

anti-Tumor Protein p73 antibody (Tyr220)**3** Images[Go to Product page](#)

Overview

Quantity:	100 µL
Target:	Tumor Protein p73 (TP73)
Binding Specificity:	Tyr220
Reactivity:	Human, Mouse
Host:	Rabbit
Clonality:	Polyclonal
Conjugate:	This Tumor Protein p73 antibody is un-conjugated
Application:	Western Blotting (WB), ELISA

Product Details

Immunogen:	Synthesized peptide derived from human p73 around the non-phosphorylation site of Y99.
Isotype:	IgG
Specificity:	P73 Polyclonal Antibody detects endogenous levels of p73 protein.
Characteristics:	Rabbit Polyclonal to p73.
Purification:	The antibody was affinity-purified from rabbit antiserum by affinity-chromatography using epitope-specific immunogen.

Target Details

Target:	Tumor Protein p73 (TP73)
Alternative Name:	p73 (TP73 Products)

Target Details

Molecular Weight:	60 kDa
Gene ID:	7161
UniProt:	O15350
Pathways:	Regulation of Cell Size, Positive Regulation of Response to DNA Damage Stimulus

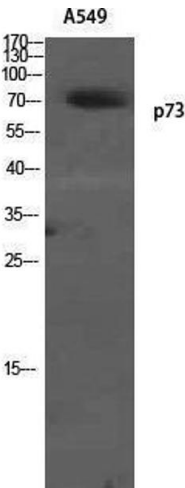
Application Details

Application Notes:	WB 1:500-1:2000, ELISA 1:20000,
Restrictions:	For Research Use only

Handling

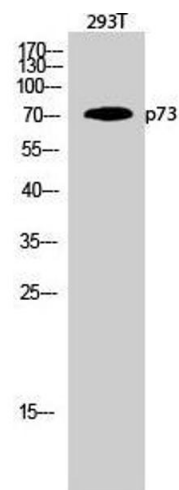
Format:	Liquid
Concentration:	1 mg/mL
Buffer:	Liquid in PBS containing 50 % glycerol, 0.5 % BSA and 0.02 % sodium azide.
Preservative:	Sodium azide
Precaution of Use:	This product contains Sodium azide: a POISONOUS AND HAZARDOUS SUBSTANCE which should be handled by trained staff only.
Handling Advice:	Avoid repeated freeze/thaw cycles.
Storage:	-20 °C
Storage Comment:	Store at -20°C.

Images



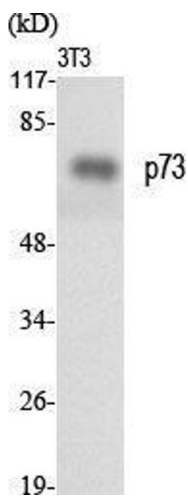
Western Blotting

Image 1.



Western Blotting

Image 2. Western Blot (WB) analysis of 293T cells using p73 Polyclonal Antibody.



Western Blotting

Image 3. Western Blot (WB) analysis of specific cells using p73 Polyclonal Antibody.