

Datasheet for ABIN3186316
anti-PAK7 antibody (C-Term)[Go to Product page](#)

2 Images

Overview

| | |
|----------------------|--|
| Quantity: | 100 µL |
| Target: | PAK7 |
| Binding Specificity: | C-Term |
| Reactivity: | Human, Mouse, Rat |
| Host: | Rabbit |
| Clonality: | Polyclonal |
| Conjugate: | This PAK7 antibody is un-conjugated |
| Application: | Western Blotting (WB), Immunohistochemistry (IHC), ELISA |

Product Details

| | |
|------------------|---|
| Immunogen: | Synthesized peptide derived from the C-terminal region of human PAK5. |
| Isotype: | IgG |
| Specificity: | PAK5 Polyclonal Antibody detects endogenous levels of PAK5 protein. |
| Characteristics: | Rabbit Polyclonal to PAK5. |
| Purification: | The antibody was affinity-purified from rabbit antiserum by affinity-chromatography using epitope-specific immunogen. |

Target Details

| | |
|-------------------|--|
| Target: | PAK7 |
| Alternative Name: | PAK5 (PAK7 Products) |

Target Details

| | |
|-------------------|------------------------|
| Molecular Weight: | 80 kDa |
| Gene ID: | 57144 |
| UniProt: | Q9P286 |

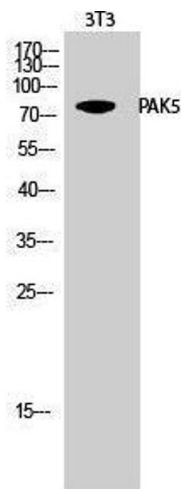
Application Details

| | |
|--------------------|--|
| Application Notes: | WB 1:500-1:2000, IHC 1:100-1:300, ELISA 1:40000, |
| Restrictions: | For Research Use only |

Handling

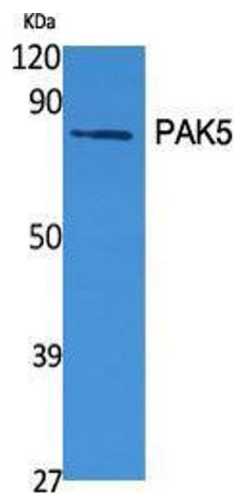
| | |
|--------------------|--|
| Format: | Liquid |
| Concentration: | 1 mg/mL |
| Buffer: | Liquid in PBS containing 50 % glycerol, 0.5 % BSA and 0.02 % sodium azide. |
| Preservative: | Sodium azide |
| Precaution of Use: | This product contains Sodium azide: a POISONOUS AND HAZARDOUS SUBSTANCE which should be handled by trained staff only. |
| Handling Advice: | Avoid repeated freeze/thaw cycles. |
| Storage: | -20 °C |
| Storage Comment: | Store at -20°C. |

Images



Western Blotting

Image 1.



Western Blotting

Image 2. Western Blot (WB) analysis of specific cells using PAK5 Polyclonal Antibody.