



[Go to Product page](#)

Datasheet for ABIN3186320

anti-PAKalpha/beta/gamma antibody (Lys18)

1 Image

Overview

Quantity:	100 µL
Target:	PAKalpha/beta/gamma
Binding Specificity:	Lys18
Reactivity:	Human, Mouse, Rat
Host:	Rabbit
Clonality:	Polyclonal
Conjugate:	This PAKalpha/beta/gamma antibody is un-conjugated
Application:	ELISA, Western Blotting (WB), Immunohistochemistry (IHC)

Product Details

Immunogen:	Synthesized peptide derived from human PAKalpha/beta/gamma around the non-phosphorylation site of T423/402/421.
Isotype:	IgG
Specificity:	PAK α / β / γ Polyclonal Antibody detects endogenous levels of PAK α / β / γ protein.
Characteristics:	Rabbit Polyclonal to PAK α / β / γ .
Purification:	The antibody was affinity-purified from rabbit antiserum by affinity-chromatography using epitope-specific immunogen.

Target Details

Target:	PAKalpha/beta/gamma
---------	---------------------

Target Details

Abstract: [PAKalpha/beta/gamma Products](#)

Molecular Weight: 17 kDa

Gene ID: 5058, 5062, 5063

UniProt: [Q13153](#), [Q13177](#), [O75914](#)

Application Details

Application Notes: WB 1:500-1:2000, IHC 1:100-1:300, ELISA 1:20000,

Restrictions: For Research Use only

Handling

Format: Liquid

Concentration: 1 mg/mL

Buffer: Liquid in PBS containing 50 % glycerol, 0.5 % BSA and 0.02 % sodium azide.

Preservative: Sodium azide

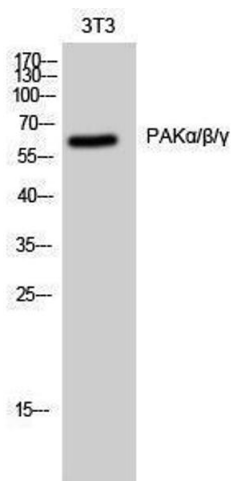
Precaution of Use: This product contains Sodium azide: a POISONOUS AND HAZARDOUS SUBSTANCE which should be handled by trained staff only.

Handling Advice: Avoid repeated freeze/thaw cycles.

Storage: -20 °C

Storage Comment: Store at -20°C.

Images



Western Blotting

Image 1.