



[Go to Product page](#)

Datasheet for ABIN3186359
anti-PDE4B/C/D antibody (Lys23)

2 Images

Overview

Quantity:	100 µL
Target:	PDE4B/C/D
Binding Specificity:	Lys23
Reactivity:	Human, Mouse, Rat
Host:	Rabbit
Clonality:	Polyclonal
Conjugate:	This PDE4B/C/D antibody is un-conjugated
Application:	Western Blotting (WB), Immunohistochemistry (IHC), ELISA

Product Details

Immunogen:	Synthesized peptide derived from human PDE4B/C/D around the non-phosphorylation site of S133/119/190.
Isotype:	IgG
Specificity:	PDE4B/C/D Polyclonal Antibody detects endogenous levels of PDE4B/C/D protein.
Characteristics:	Rabbit Polyclonal to PDE4B/C/D.
Purification:	The antibody was affinity-purified from rabbit antiserum by affinity-chromatography using epitope-specific immunogen.

Target Details

Target:	PDE4B/C/D
---------	-----------

Target Details

Alternative Name: PDE4B/C/D ([PDE4B/C/D Products](#))

Molecular Weight: 17 kDa

Gene ID: 5144, 5142, 5143

UniProt: [Q07343](#), [Q08493](#), [Q08499](#)

Application Details

Application Notes: WB 1:500-1:2000, IHC 1:100-1:300, ELISA 1:10000,

Restrictions: For Research Use only

Handling

Format: Liquid

Concentration: 1 mg/mL

Buffer: Liquid in PBS containing 50 % glycerol, 0.5 % BSA and 0.02 % sodium azide.

Preservative: Sodium azide

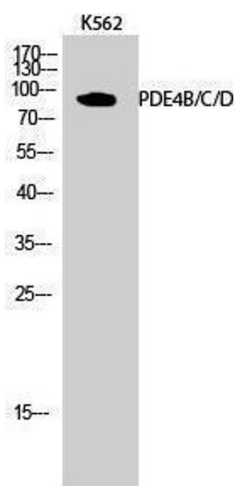
Precaution of Use: This product contains Sodium azide: a POISONOUS AND HAZARDOUS SUBSTANCE which should be handled by trained staff only.

Handling Advice: Avoid repeated freeze/thaw cycles.

Storage: -20 °C

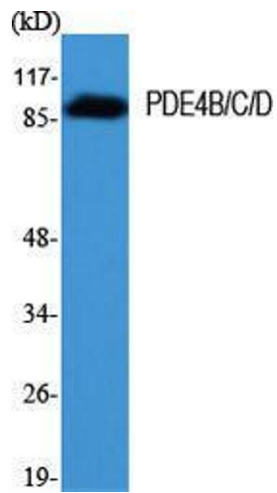
Storage Comment: Store at -20°C.

Images



Western Blotting

Image 1.



Western Blotting

Image 2. Western Blot (WB) analysis of specific cells using PDE4B/C/D Polyclonal Antibody.