

Datasheet for ABIN3186372  
**anti-PDHA1 antibody (C-Term)**[Go to Product page](#)

## 1 Image

## Overview

|                      |  |
|----------------------|--|
| Quantity:            | 100 µL   |
| Target:              | PDHA1  |
| Binding Specificity: | C-Term   |
| Reactivity:          | Human, Mouse, Rat  |
| Host:                | Rabbit   |
| Clonality:           | Polyclonal   |
| Conjugate:           | This PDHA1 antibody is un-conjugated                     |
| Application:         | Western Blotting (WB), ELISA, Immunohistochemistry (IHC) |

## Product Details

|                  |   |
|------------------|---|
| Immunogen:       | Synthesized peptide derived from the C-terminal region of human PDHA1.  |
| Isotype:         | IgG   |
| Specificity:     | PDHA1 Polyclonal Antibody detects endogenous levels of PDHA1 protein.   |
| Characteristics: | Rabbit Polyclonal to PDHA1.   |
| Purification:    | The antibody was affinity-purified from rabbit antiserum by affinity-chromatography using epitope-specific immunogen. |

## Target Details

|                   |  |
|-------------------|--|
| Target:           | PDHA1                                    |
| Alternative Name: | PDHA1 ( <a href="#">PDHA1 Products</a> ) |

## Target Details

|                   |                                |
|-------------------|--------------------------------|
| Molecular Weight: | 43 kDa                         |
| Gene ID:          | 5160                           |
| UniProt:          | <a href="#">P08559</a>         |
| Pathways:         | <a href="#">Warburg Effect</a> |

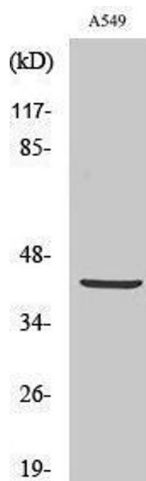
## Application Details

|                    |  |
|--------------------|--|
| Application Notes: | WB 1:500-1:2000, IHC 1:100-1:300, ELISA 1:40000, |
| Restrictions:      | For Research Use only                            |

## Handling

|                    |  |
|--------------------|--|
| Format:            | Liquid   |
| Concentration:     | 1 mg/mL  |
| Buffer:            | Liquid in PBS containing 50 % glycerol, 0.5 % BSA and 0.02 % sodium azide.   |
| Preservative:      | Sodium azide   |
| Precaution of Use: | This product contains Sodium azide: a POISONOUS AND HAZARDOUS SUBSTANCE which should be handled by trained staff only. |
| Handling Advice:   | Avoid repeated freeze/thaw cycles.   |
| Storage:           | -20 °C   |
| Storage Comment:   | Store at -20°C.  |

## Images



### Western Blotting

Image 1.