



[Go to Product page](#)

Datasheet for ABIN3186392

anti-SLC15A1 antibody (Internal Region)

1 Image

Overview

Quantity:	100 µL
Target:	SLC15A1
Binding Specificity:	Internal Region
Reactivity:	Human, Mouse, Rat
Host:	Rabbit
Clonality:	Polyclonal
Conjugate:	This SLC15A1 antibody is un-conjugated
Application:	Western Blotting (WB), ELISA

Product Details

Immunogen:	Synthesized peptide derived from the Internal region of human PEPT1.
Isotype:	IgG
Specificity:	PEPT1 Polyclonal Antibody detects endogenous levels of PEPT1 protein.
Characteristics:	Rabbit Polyclonal to PEPT1.
Purification:	The antibody was affinity-purified from rabbit antiserum by affinity-chromatography using epitope-specific immunogen.

Target Details

Target:	SLC15A1
Alternative Name:	PEPT1 (SLC15A1 Products)

Target Details

Molecular Weight: 37 kDa

Gene ID: 6564

UniProt: [P46059](#)

Application Details

Application Notes: WB 1:500-1:2000, ELISA 1:40000,

Restrictions: For Research Use only

Handling

Format: Liquid

Concentration: 1 mg/mL

Buffer: Liquid in PBS containing 50 % glycerol, 0.5 % BSA and 0.02 % sodium azide.

Preservative: Sodium azide

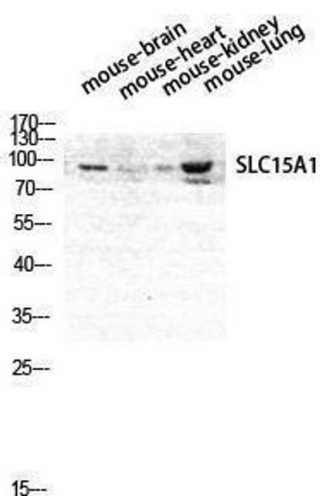
Precaution of Use: This product contains Sodium azide: a POISONOUS AND HAZARDOUS SUBSTANCE which should be handled by trained staff only.

Handling Advice: Avoid repeated freeze/thaw cycles.

Storage: -20 °C

Storage Comment: Store at -20°C.

Images



Western Blotting

Image 1.