



[Go to Product page](#)

Datasheet for ABIN3186428
anti-OLFML2B antibody (Internal Region)

1 Image

Overview

Quantity:	100 µL
Target:	OLFML2B
Binding Specificity:	Internal Region
Reactivity:	Human, Mouse
Host:	Rabbit
Clonality:	Polyclonal
Conjugate:	This OLFML2B antibody is un-conjugated
Application:	Western Blotting (WB), ELISA, Immunohistochemistry (IHC), Immunofluorescence (IF)

Product Details

Immunogen:	Synthesized peptide derived from the Internal region of human Photomedin-2.
Isotype:	IgG
Specificity:	Photomedin-2 Polyclonal Antibody detects endogenous levels of Photomedin-2 protein.
Characteristics:	Rabbit Polyclonal to Photomedin-2.
Purification:	The antibody was affinity-purified from rabbit antiserum by affinity-chromatography using epitope-specific immunogen.

Target Details

Target:	OLFML2B
Alternative Name:	Photomedin-2 (OLFML2B Products)

Target Details

Molecular Weight: 84 kDa

Gene ID: 25903

UniProt: [Q68BL8](#)

Application Details

Application Notes: WB 1:500-1:2000, IHC 1:100-1:300, IF 1:200-1:1000, ELISA 1:10000,

Restrictions: For Research Use only

Handling

Format: Liquid

Concentration: 1 mg/mL

Buffer: Liquid in PBS containing 50 % glycerol, 0.5 % BSA and 0.02 % sodium azide.

Preservative: Sodium azide

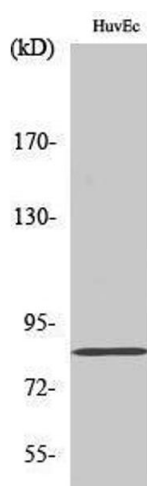
Precaution of Use: This product contains Sodium azide: a POISONOUS AND HAZARDOUS SUBSTANCE which should be handled by trained staff only.

Handling Advice: Avoid repeated freeze/thaw cycles.

Storage: -20 °C

Storage Comment: Store at -20°C.

Images



Western Blotting

Image 1.