

Datasheet for ABIN3186475
anti-PKC epsilon antibody (Thr308)



[Go to Product page](#)

1 Image

Overview

Quantity:	100 µL
Target:	PKC epsilon (PRKCE)
Binding Specificity:	Thr308
Reactivity:	Human, Mouse, Rat
Host:	Rabbit
Clonality:	Polyclonal
Conjugate:	This PKC epsilon antibody is un-conjugated
Application:	Western Blotting (WB), ELISA

Product Details

Immunogen:	Synthesized peptide derived from human PKC epsilon around the non-phosphorylation site of S729.
Isotype:	IgG
Specificity:	PKC ε Polyclonal Antibody detects endogenous levels of PKC ε protein.
Characteristics:	Rabbit Polyclonal to PKC ε.
Purification:	The antibody was affinity-purified from rabbit antiserum by affinity-chromatography using epitope-specific immunogen.

Target Details

Target:	PKC epsilon (PRKCE)
---------	---------------------

Target Details

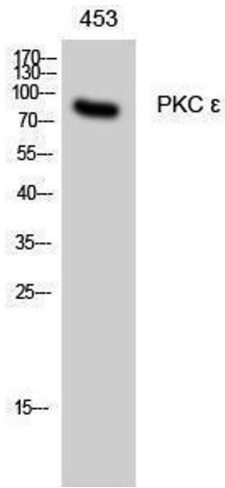
Alternative Name:	PKC epsilon (PRKCE Products)
Molecular Weight:	55 kDa
Gene ID:	5581
UniProt:	Q02156
Pathways:	TCR Signaling , EGFR Signaling Pathway , Neurotrophin Signaling Pathway , Positive Regulation of Peptide Hormone Secretion , Activation of Innate immune Response , Cellular Response to Molecule of Bacterial Origin , Regulation of Actin Filament Polymerization , Myometrial Relaxation and Contraction , Regulation of Carbohydrate Metabolic Process , Interaction of EGFR with phospholipase C-gamma , Thromboxane A2 Receptor Signaling

Application Details

Application Notes:	WB 1:500-1:2000, ELISA 1:5000,
Restrictions:	For Research Use only

Handling

Format:	Liquid
Concentration:	1 mg/mL
Buffer:	Liquid in PBS containing 50 % glycerol, 0.5 % BSA and 0.02 % sodium azide.
Preservative:	Sodium azide
Precaution of Use:	This product contains Sodium azide: a POISONOUS AND HAZARDOUS SUBSTANCE which should be handled by trained staff only.
Handling Advice:	Avoid repeated freeze/thaw cycles.
Storage:	-20 °C
Storage Comment:	Store at -20°C.



Western Blotting

Image 1.