



Datasheet for ABIN3186477
anti-PKC zeta antibody (Thr33)



[Go to Product page](#)

2 Images

Overview

Quantity:	100 µL
Target:	PKC zeta (PRKCZ)
Binding Specificity:	Thr33
Reactivity:	Human, Mouse, Rat, Monkey
Host:	Rabbit
Clonality:	Polyclonal
Conjugate:	This PKC zeta antibody is un-conjugated
Application:	Western Blotting (WB), ELISA, Immunohistochemistry (IHC), Immunofluorescence (IF)

Product Details

Immunogen:	Synthesized peptide derived from human PKC zeta around the non-phosphorylation site of T560.
Isotype:	IgG
Specificity:	PKC ζ Polyclonal Antibody detects endogenous levels of PKC ζ protein.
Characteristics:	Rabbit Polyclonal to PKC ζ.
Purification:	The antibody was affinity-purified from rabbit antiserum by affinity-chromatography using epitope-specific immunogen.

Target Details

Target:	PKC zeta (PRKCZ)
---------	------------------

Target Details

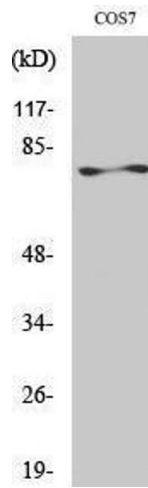
Alternative Name:	PKC zeta (PRKCZ Products)
Molecular Weight:	30/25 kDa
Gene ID:	5590
UniProt:	Q05513
Pathways:	NF-kappaB Signaling , RTK Signaling , Myometrial Relaxation and Contraction , Regulation of Leukocyte Mediated Immunity , Positive Regulation of Immune Effector Process , Synaptic Membrane , Production of Molecular Mediator of Immune Response , CXCR4-mediated Signaling Events , Thromboxane A2 Receptor Signaling

Application Details

Application Notes:	WB 1:500-1:2000, IHC 1:100-1:300, IF 1:200-1:1000, ELISA 1:5000,
Restrictions:	For Research Use only

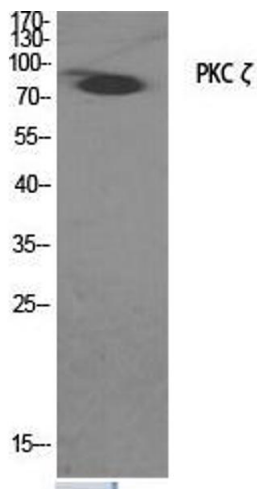
Handling

Format:	Liquid
Concentration:	1 mg/mL
Buffer:	Liquid in PBS containing 50 % glycerol, 0.5 % BSA and 0.02 % sodium azide.
Preservative:	Sodium azide
Precaution of Use:	This product contains Sodium azide: a POISONOUS AND HAZARDOUS SUBSTANCE which should be handled by trained staff only.
Handling Advice:	Avoid repeated freeze/thaw cycles.
Storage:	-20 °C
Storage Comment:	Store at -20°C.



Western Blotting

Image 1.



Western Blotting

Image 2. Western Blot (WB) analysis of specific cells using PKC zeta Polyclonal Antibody.