



[Go to Product page](#)

Datasheet for ABIN3186500
anti-PLCB3 antibody (Thr235)

2 Images

Overview

Quantity:	100 µL
Target:	PLCB3
Binding Specificity:	Thr235
Reactivity:	Human, Rat, Mouse
Host:	Rabbit
Clonality:	Polyclonal
Conjugate:	This PLCB3 antibody is un-conjugated
Application:	Western Blotting (WB), Immunohistochemistry (IHC), ELISA

Product Details

Immunogen:	Synthesized peptide derived from human PLC beta3 around the non-phosphorylation site of S1105.
Isotype:	IgG
Specificity:	PLC β3 Polyclonal Antibody detects endogenous levels of PLC β3 protein.
Characteristics:	Rabbit Polyclonal to PLC β3.
Purification:	The antibody was affinity-purified from rabbit antiserum by affinity-chromatography using epitope-specific immunogen.

Target Details

Target:	PLCB3
---------	-------

Target Details

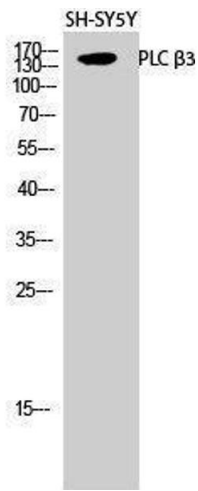
Alternative Name:	PLC Beta3 (PLCB3 Products)
Molecular Weight:	36 kDa
Gene ID:	5331
UniProt:	Q01970
Pathways:	WNT Signaling , Thyroid Hormone Synthesis , Myometrial Relaxation and Contraction , CXCR4-mediated Signaling Events , G-protein mediated Events

Application Details

Application Notes:	WB 1:500-1:2000, IHC 1:100-1:300, ELISA 1:40000,
Restrictions:	For Research Use only

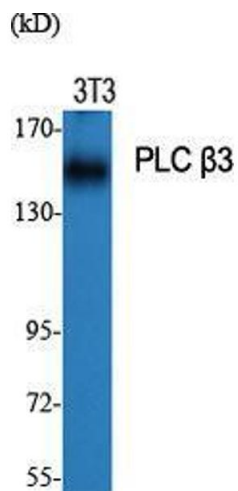
Handling

Format:	Liquid
Concentration:	1 mg/mL
Buffer:	Liquid in PBS containing 50 % glycerol, 0.5 % BSA and 0.02 % sodium azide.
Preservative:	Sodium azide
Precaution of Use:	This product contains Sodium azide: a POISONOUS AND HAZARDOUS SUBSTANCE which should be handled by trained staff only.
Handling Advice:	Avoid repeated freeze/thaw cycles.
Storage:	-20 °C
Storage Comment:	Store at -20°C.



Western Blotting

Image 1.



Western Blotting

Image 2. Western Blot (WB) analysis of specific cells using PLC beta3 Polyclonal Antibody.