



[Go to Product page](#)

Datasheet for ABIN3186559  
**anti-PRIM1 antibody (C-Term)**

1 Image

### Overview

Quantity:	100 µL
Target:	PRIM1
Binding Specificity:	C-Term
Reactivity:	Human, Mouse, Rat
Host:	Rabbit
Clonality:	Polyclonal
Conjugate:	This PRIM1 antibody is un-conjugated
Application:	Western Blotting (WB), ELISA, Immunohistochemistry (IHC)

### Product Details

Immunogen:	Synthesized peptide derived from the C-terminal region of human PRIM1.
Isotype:	IgG
Specificity:	PRIM1 Polyclonal Antibody detects endogenous levels of PRIM1 protein.
Characteristics:	Rabbit Polyclonal to PRIM1.
Purification:	The antibody was affinity-purified from rabbit antiserum by affinity-chromatography using epitope-specific immunogen.

### Target Details

Target:	PRIM1
Alternative Name:	PRIM1 ( <a href="#">PRIM1 Products</a> )

## Target Details

---

Molecular Weight:	50 kDa
Gene ID:	5557
UniProt:	<a href="#">P49642</a>
Pathways:	<a href="#">Telomere Maintenance</a> , <a href="#">Mitotic G1-G1/S Phases</a> , <a href="#">DNA Replication</a> , <a href="#">Synthesis of DNA</a> , <a href="#">SARS-CoV-2 Protein Interactome</a>

## Application Details

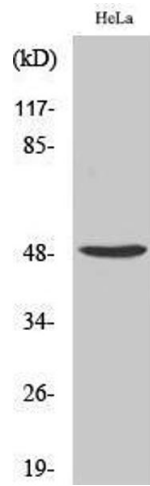
---

Application Notes:	WB 1:500-1:2000, IHC 1:100-1:300, ELISA 1:10000,
Restrictions:	For Research Use only

## Handling

---

Format:	Liquid
Concentration:	1 mg/mL
Buffer:	Liquid in PBS containing 50 % glycerol, 0.5 % BSA and 0.02 % sodium azide.
Preservative:	Sodium azide
Precaution of Use:	This product contains Sodium azide: a POISONOUS AND HAZARDOUS SUBSTANCE which should be handled by trained staff only.
Handling Advice:	Avoid repeated freeze/thaw cycles.
Storage:	-20 °C
Storage Comment:	Store at -20°C.



### Western Blotting

Image 1.